



FH **Fulton Hogan**

Victoria/Tasmania (and Australian head office)
Level 1, Building 7,
Botanicca Corporate Park,
572 Swan Street, Richmond
PO Box 56, Hawthorn VIC 3122
T 03 9340 6200

New South Wales/ACT
Level 3, 61 Dunning Avenue,
Rosebery
PO Box 6099,
Alexandria NSW 2015
T 02 8346 9400

Queensland
Building 8, Garden City Office Park,
2404 Logan Road,
Eight Mile Plains
PO Box 6263,
Upper Mt Gravatt QLD 4122
T 07 3291 5600

**South Australia/
Northern Territory**
26 Greenhill Road,
Wayville SA 5034
T 08 8177 8500

Western Australia
Level 1, 80 Hasler Road,
Osborne Park WA 6017
PO Box 1136,
Innaloo WA 6918
T 08 9208 8600

www.fultonhogan.com
info@fultonhogan.com.au

FH **Fulton Hogan**

www.fultonhogan.com

**WATER &
WASTEWATER
INFRASTRUCTURE**
Delivering technical excellence and
cost-effective solutions



Koorlong Wastewater Treatment Plant, Mildura, Victoria.

Partnering with water and wastewater infrastructure providers

The management of our water and wastewater assets is a challenging task for owners and managers alike. With many water and wastewater assets fast approaching the end of their life cycle, significant capital investment is often required to meet burgeoning community needs.

For the past 10 years, Fulton Hogan has been assisting owners and managers in constructing, augmenting and managing water and wastewater infrastructure – typically through partnerships that are formed at the onset of the project.

It is the highly collaborative environment created by owners and managers that drives Fulton Hogan's involvement in the water and wastewater sector.

As a company committed to creating long-lasting relationships we enjoy sharing our knowledge and experiences to maximise innovation and value-added solutions.

To support asset owners and managers in their quest to improve infrastructure, Fulton Hogan employs a strong team of civil, mechanical and electrical engineers, environmental, safety and quality professionals and commissioning experts. They each bring with them technical excellence and a can-do attitude.

The one item that has remained above all while working in conjunction with Fulton Hogan is the CAN-DO attitude. Throughout the (Frankston Recycle Pump Station) project whilst interacting with various staff at various levels, professionalism through the project was maintained that surpassed many other subcontractors in the past and the desire to satisfy the customer was first class.

**Andrew Cary, Senior Project Manager – Capital Works
South East Water**

The Fulton Hogan advantage

Comprehensive services

As a specialist in civil construction, surfacing and maintenance, Fulton Hogan is able to provide a whole-of-life management service. Our vertically-integrated model allows us to construct and upgrade facilities and maintain this infrastructure to ensure a long and efficient life.

Australia-wide

Fulton Hogan has nearly 2000 employees in mainland Australia operating from more than 40 locations. This widespread geographical footprint allows us to deliver outstanding outcomes by bringing our regional knowledge to projects and engaging with local communities.

Maintaining a customer focus

Over its long history, Fulton Hogan has focused on understanding our customers' long-term needs, delivering projects on time and on budget, and frequently exceeding expectations. For example, on the Goulburn-Campaspe Link Pipeline project in Victoria we worked with the customer to convert the traditional contract to an alliance to fast track the design and meet a tight delivery time-frame due to the drought and the dwindling water supply to the City of Bendigo.

Self-performing

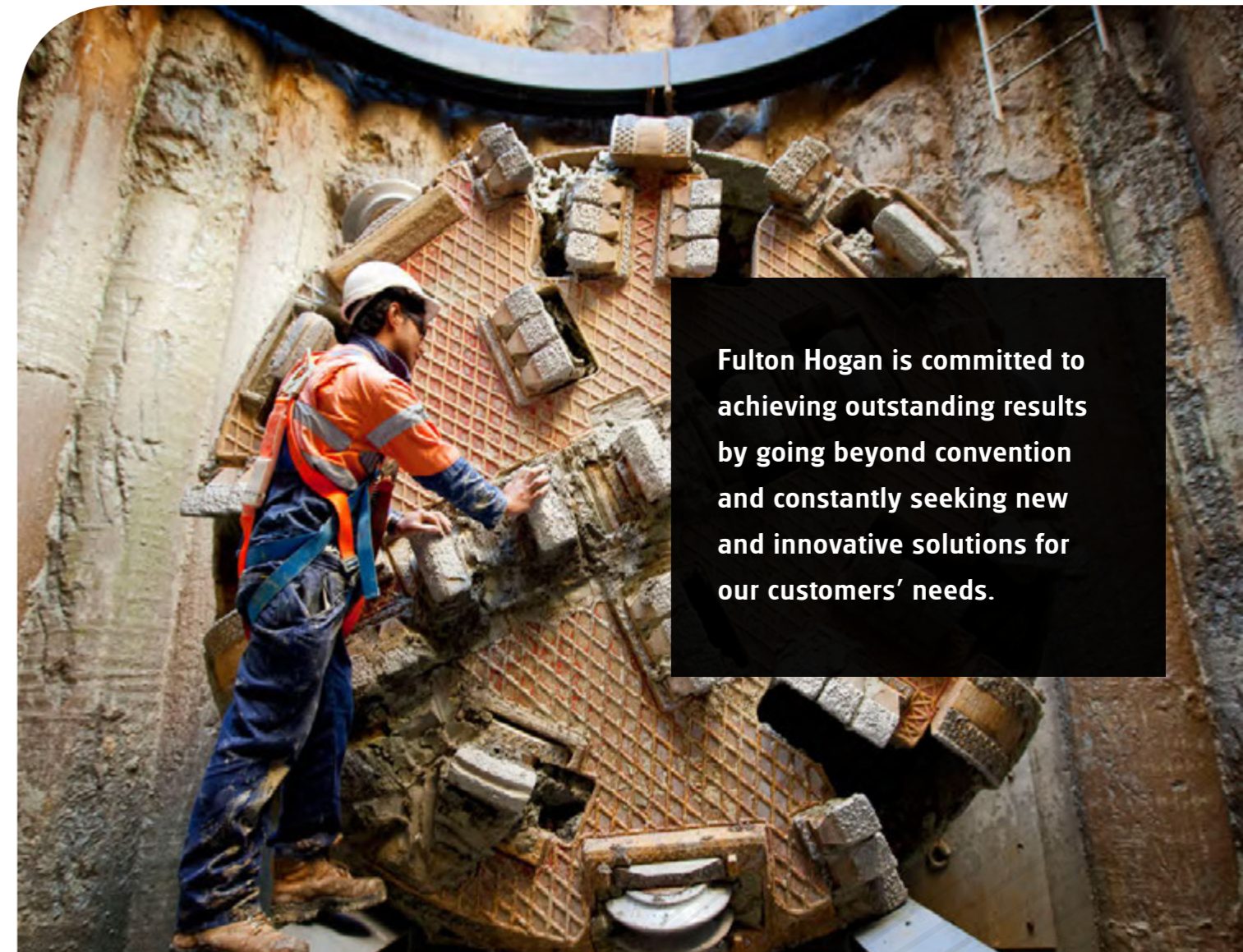
Fulton Hogan has significant in-house resources capable of undertaking a broad range of projects, supplemented, where appropriate, by specialist subcontractors. By managing the internal supply chain through our unique vertically-integrated business model, we maximise value and provide safe outcomes.

In-house specialists

Fulton Hogan has in-house water and wastewater specialists comprised of civil, mechanical, electrical and commissioning engineers. Together with our environmental, safety and quality professionals, we work in partnership with customers to deliver value-adding solutions.

Leaders in innovation

Fulton Hogan is committed to achieving outstanding results by going beyond convention and constantly seeking new and innovative solutions for our customers' needs. The use of incremental launch technology for the construction of the Werribee River aqueduct for Melbourne Water's Pipelines Alliance is just one of many examples of technical excellence.



Fulton Hogan is committed to achieving outstanding results by going beyond convention and constantly seeking new and innovative solutions for our customers' needs.

Sandgate flood relief drainage project, Frankston-Hastings Road tunnel breakthrough.



Fulton Hogan has the experience and resources to enter into successful collaborative arrangements, both as a partner and a head contractor.

Experienced in collaborative relationships and alliances

Fulton Hogan has the experience and resources to enter into successful collaborative arrangements, both as a partner and head contractor. This is evidenced by our two successful five-year program alliances with Melbourne Water – the Pipelines Alliance delivering sewerage and stormwater projects and the Waterways Alliance to restore the health of Greater Melbourne's waterways.

Financially stable

With assets of over \$1.5 billion and a long history of financial stability, Fulton Hogan has the strength to ensure projects are successfully delivered. This stability allows us to manage multiple projects across the water and wastewater sector without compromising stakeholder relationships.

Stable, long-term relationships

Fulton Hogan values and fosters open and honest relationships with its customers, employees, suppliers and subcontractors. We are proud that over 90 percent of our work is from repeat customers.

Industry-leading safety practices

Working safely is Fulton Hogan's number one priority. Our 'Zero Harm' policy has led to the company approaching industry best practice in safety. We understand the demands of working in hazardous environments such as confined spaces or in live sewers and have dedicated specialist sewer platform construction crews who are trained and highly experienced in confined space entry.

Water supply and treatment

Value-engineered, innovative solutions

From planning and design management, through procurement, construction, commissioning and maintenance, Fulton Hogan delivers water supply (including dams, storages and pipelines), water treatment and wastewater treatment facilities that meet, or more often surpass, our customers' requirements.

As a vertically-integrated company, Fulton Hogan is able to draw on a wide range of specialist technical resources – mechanical, process and electrical engineering as well as commissioning specialists – to deliver all aspects of a project, including structures, pumping stations, pipeworks, roads and drainage. Our comprehensive services also include testing and proof-of-performance.

Our clients include water authorities and local government bodies such as Melbourne Water, Coliban Water, Byron Shire Council, Lower Murray Water, NSW State Water and Tweed Shire Council.



Fulton Hogan has the experience and resources to work efficiently and effectively on greenfield and brownfield sites and in remote or challenging locations.

Wastewater treatment



Working with customers and communities

Fulton Hogan has a proven track record in delivering wastewater treatment facilities, including new plants, upgrades and augmentations.

As a 'right-size' company, Fulton Hogan is able to draw on its comprehensive in-house construction and project management resources from across Australia. We have also established long-term relationships with specialist suppliers and subcontractors to complement our skill base.

However, many consider Fulton Hogan's greatest strength to be our ability to work with our customers and their communities to develop innovative design and construction solutions that often exceed their environmental, quality and performance expectations.

Key projects -

- Ballarat South Wastewater Treatment Plant, Sludge Dewatering Facility, Victoria.
- Sewage Treatment Plant Augmentation, New South Wales.
- Batemans Bay Sewage Treatment Plant, New South Wales.
- Box Hill West Flow Control Facility, Victoria.
- Brunswick Valley Sewage Treatment Plant, New South Wales.
- Kingscliff Sewage Treatment Plant, New South Wales.
- Koorlong Wastewater Treatment Plant, Victoria.
- Maroochydore Sewage Treatment Plant Augmentation, Queensland.
- Mount Martha Sewage Treatment Plant, disinfection facility upgrade, Victoria.
- Port Macquarie Sewage Treatment Plant Augmentation, New South Wales.
- Surbiton Park Sludge Dewatering Facility, Victoria.

Brunswick Valley Sewage Treatment Plant replaces two older wastewater plants at Mullumbimby and Brunswick Heads in NSW.

Pipeline and pump station

Building on experience

Fulton Hogan has over 30 years experience in pipeline and pump station construction in Australia. In that time we have worked on many complex operations involving large-diameter reticulation, outfall and trunk sewers, live sewers, rising mains, trunk water mains, stormwater drains and remediation works.

In 2008 Fulton Hogan was awarded a five-year, \$150 million Pipeline Program Alliance with Melbourne Water. The project scope includes sewerage and drainage pipelines throughout the Greater Melbourne region, as well as the Sandgate Drain, stage 1 and 2 tunnelling projects, and Werribee Sewage Aqueduct.

We are largely self-performing, having developed skilled pipeline teams that are supported by specialist plant and equipment and overseen by dedicated project managers.

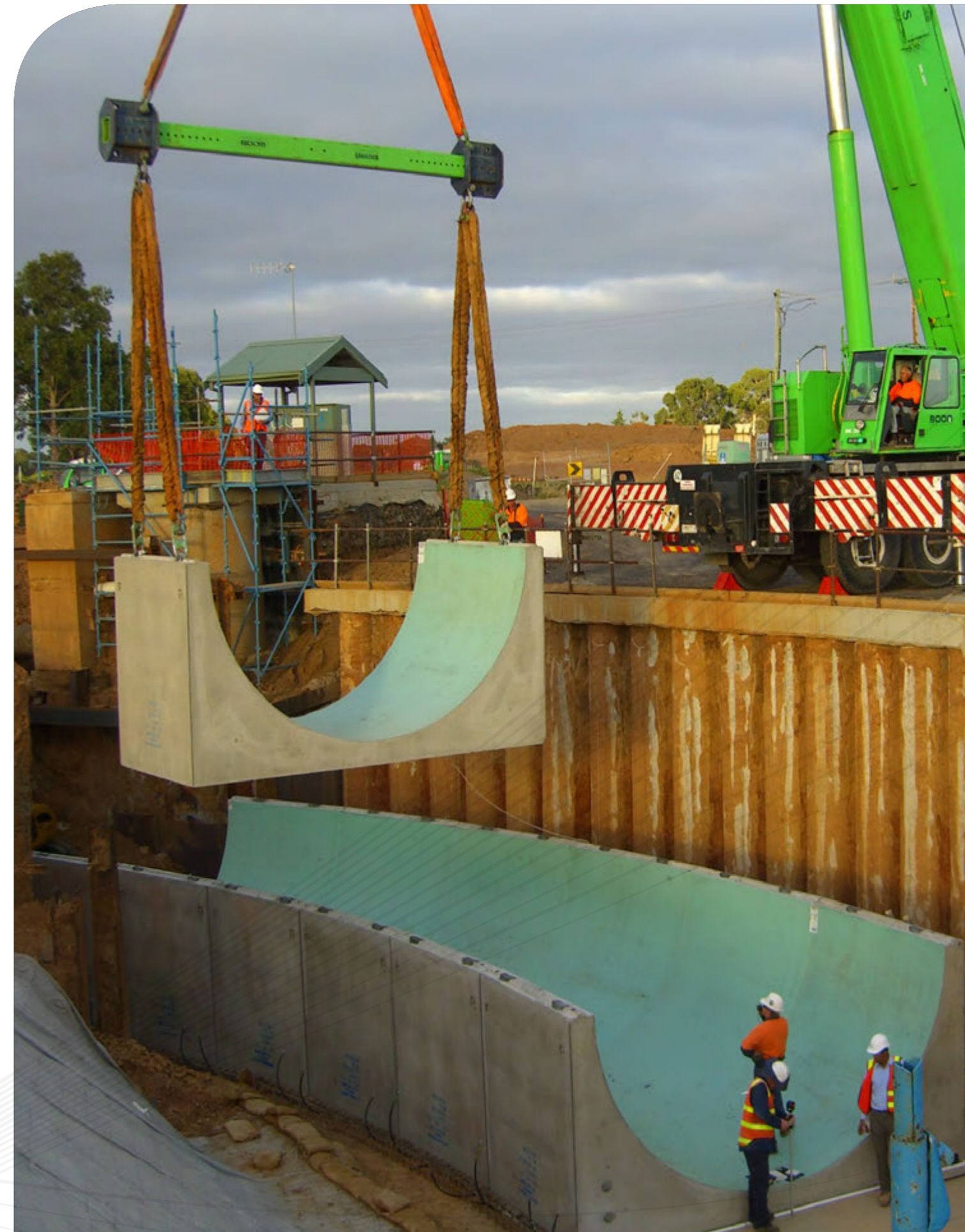
Fulton Hogan has the skills and experience to work safely in confined spaces and on live sewers, in all ground conditions and within roadways.

Key projects

- Robinvale High Pressure Pump Station, Victoria.
- Werribee Sewage Aqueduct, Victoria.
- Goulburn-Campaspe Link Pipeline and Pump station, Victoria.
- Sandgate Waste Water Treatment Plant, stage 1 and 2 tunnelling project, Victoria.
- Coman Street Water Main Replacement, Victoria.
- Docklands Outfall Drain, Victoria.
- Eastern Irrigation Scheme, Victoria.
- Henry Road Branch Sewer, Victoria.
- Laurimar Outfall Sewer, Rising Main and Pump Station, Victoria.
- Melbourne Water Pipeline Alliance, Victoria.
- Springhill Pump Station and Rising Main, Victoria.
- Northern Pipeline, South Australia.
- Prospect Reservoir Pipeline Upgrade, New South Wales.



Fulton Hogan have experience including large-diameter reticulation, outfall and trunk sewers, live sewers, rising mains, trunk water mains, stormwater drains and remediation works.



Werribee Sewage Aqueduct replacement was completed by the Pipelines Program Alliance.

Bulk water storage and dam safety



A comprehensive approach to complex projects

Fulton Hogan has the capacity, experience, people and technology to undertake a range of water storage related projects across Australia.

We can design and construct cost-effective solutions for dams of all construction types and concrete storage reservoirs, as well as perform remediation and hydro power equipment upgrades.

Our construction teams are well aware of the challenges of working in a bulk water environment and strictly apply Fulton Hogan's 'Zero Harm' safety policy.

Key projects

- Koondrook Perricoota Forest Flood Enhancement Works Project, New South Wales.
- Jindabyne Dam, spillway upgrade and outlet works, New South Wales.
- Caledonia Reservoir Upgrade, Victoria.
- Clarkes Road Reservoir Upgrade, Victoria.
- Mooroolbool Dam Upgrade, Victoria.

We can design and construct cost-effective solutions for dams of all construction types and concrete storage reservoirs.

Waterway improvements

Enhancing and protecting a key natural resource

Fulton Hogan's design, construction and maintenance skills also apply to improving the health of our waterways and mitigating flooding.

Works have included large-scale artificial wetland construction, bank and bed stabilisation, fishway construction and associated in-stream civil works.

The company has the resources to self-perform on many projects or carry out civil works either in an alliance or as the head contractor with complementary weed control and revegetation partners.

Our in-house resources also include environmental engineers who work within project teams or across departments or business units, conducting environmental inspections and audits and ensuring compliance with environmental management requirements.

Fulton Hogan are currently part of a five-year \$90 million Waterways Alliance with Melbourne Water for the management of waterways and stormwater quality.

The Alliance is working to restore the health of the rivers and creeks of Greater Melbourne. Projects conducted under the Melbourne Water Waterways Alliance include:

- Dights Falls Weir and Fishway Reconstruction.
- Tanti Creek Wetland and Retarding Basin.
- Brushy Creek Flood Protection and Wetland works.
- Dandenong Valley Wetland.
- Clayton South Wetland and Retarding Basin.
- River Gum Creek Rehabilitation.

In 2010 Fulton Hogan was awarded the Koondrook Perricoota Forest Flood Enhancement Works Project by NSW State Water. This project involved 42 kilometre-long levee, nine regulatory gate structures and a vertical slot fish pass.



Fulton Hogan secured a five-year Waterways Alliance with Melbourne Water for the management of waterways and stormwater quality.