

WOLLONGONG CITY COUNCIL AND SHELLHARBOUR CITY COUNCIL  
M1 PRINCES MOTORWAY  
ALBION PARK RAIL BYPASS  
STAGE 2 - PRINCES MOTORWAY BETWEEN YALLAH AND OAK FLATS




ENVIRONMENTAL  
PART 1 ACCEPTED FOR CONSTRUCTION



## LOCALITY PLAN

NOT TO SCALE

FOR CONSTRUCTION

DRAWING FILE LOCATION / NAME X:\Projects\00037 Albion Park Rail Bypass\AutoCAD\Drawings\EN Environmental\00037-DRG-EN-01-0001_1031.dwg		LINEAR REFERENCING START: FINISH:		PLOT DATE / TIME 29 May 2020 12:09:45		PLOT BY andre		CLIENT  <b>Transport Roads &amp; Maritime Services</b>		WOLLONGONG CITY COUNCIL AND SHELLHARBOUR CITY COUNCIL M1 PRINCES MOTORWAY ALBION PARK RAIL BYPASS STG 2 - PRINCES MWY BETWEEN YALLAH & OAK FLATS		A3	
PREPARED BY 		CONTRACTOR 		DESIGNED		REVIEWED		VERIFIED		RMS PROJECT MANAGER NAME ..... TITLE..... VALIDATION AND ACCEPTANCE OF THESE DRAWINGS AND THE DESIGN SHOWN THEREON IS TO BE CARRIED OUT UNDER SEPARATE PROCESS		PREPARED FOR	
SIGNED ..... NAME ..... TITLE ..... DATE .....		SIGNED ..... NAME ..... TITLE ..... DATE .....		SIGNED ..... NAME ..... TITLE ..... DATE .....		RMS REGISTRATION No. <b>DS2018/001756</b>		ISSUE STATUS ACCEPTED FOR CONSTRUCTION		EDMS No.		SHEET No. EN-01-0001	
PART 1		ISSUE 03											

© Roads and Maritime Services

THIS DRAWING MAY BE PREPARED IN COLOUR AND MAY BE INCOMPLETE IF COPIED

WOLLONGONG CITY COUNCIL AND SHELLHARBOUR CITY COUNCIL

M1 PRINCES MOTORWAY

M1 PRINCES MOTORWAY

STAGE 2 - PRINCES MOTORWAY BETWEEN YALLAH AND OAK FLATS

ENVIRONMENTAL

DRAWING	TITLE
GENERAL	
D0037-DRG-EN-0001	COVER SHEET ENVIRONMENTAL SHEET 1 OF 1
D0037-DRG-EN-0011	DRAWING INDEX ENVIRONMENTAL SHEET 1 OF 1
PLANS	
D0037-DRG-EN-1001	NOT USED
D0037-DRG-EN-1002	SENSITIVE AREA PLANS ENVIRONMENTAL SHEET 2 OF 9
D0037-DRG-EN-1003	SENSITIVE AREA PLANS ENVIRONMENTAL SHEET 3 OF 9
D0037-DRG-EN-1004	SENSITIVE AREA PLANS ENVIRONMENTAL SHEET 4 OF 9
D0037-DRG-EN-1005	SENSITIVE AREA PLANS ENVIRONMENTAL SHEET 5 OF 9
D0037-DRG-EN-1006	SENSITIVE AREA PLANS ENVIRONMENTAL SHEET 6 OF 9
D0037-DRG-EN-1007	SENSITIVE AREA PLANS ENVIRONMENTAL SHEET 7 OF 9
D0037-DRG-EN-1008	SENSITIVE AREA PLANS ENVIRONMENTAL SHEET 8 OF 9
D0037-DRG-EN-1009	SENSITIVE AREA PLANS ENVIRONMENTAL SHEET 9 OF 9

THIS DRAWING MAY BE PREPARED IN COLOUR AND MAY BE INCOMPLETE IF COPIED

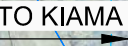
0 5 10 15 20 25 30 35 40 45 50mm ON A3 SIZE ORIGINAL

DRAWING FILE LOCATION / NAME X:\Projects\D0037 Albion Park Rail Bypass\AutoCAD\Drawings\EN Environmental\D0037-DRG-EN-01-0011_1031.dwg					DESIGN LOT CODE CE		DESIGN MODEL FILE(S) USED FOR DOCUMENTATION OF THIS DRAWING				PLOT DATE / TIME 29 May 2020 12:10:06		PLOT BY andre		CLIENT		WOLLONGONG CITY COUNCIL AND SHELLHARBOUR CITY COUNCIL M1 PRINCES MOTORWAY ALBION PARK RAIL BYPASS STG 2 - PRINCES MWY BETWEEN YALLAH & OAK FLATS ENVIRONMENTAL DRAWING INDEX		A3		
EXTERNAL REFERENCE FILES					REV	DATE	AMENDMENT / REVISION DESCRIPTION		WVR No.	APPROVAL	SCALES ON A3 SIZE DRAWING		DRAWINGS / DESIGN PREPARED BY		TITLE	NAME	DATE	<div><div><div>Transport</div><div>Roads &amp; Maritime</div><div>Services</div></div></div> <div>PREPARED FOR</div> <div>RMS REGISTRATION No. <b>DS2018/001756</b></div> <div>ISSUE STATUS ACCEPTED FOR CONSTRUCTION</div> <div>EDMS No.</div> <div>SHEET No. EN-01-0011</div> <div>PART 1</div> <div>ISSUE 03</div>			
					01	14.01.2019	ISSUED FOR CONSTRUCTION		NA		 		DRAWN		D.BOURKE	29.05.20					
					02	24.01.2020	RE-ISSUED FOR CONSTRUCTION		NA				DRG CHECK		M.DOUGLAS	29.05.20					
					03	29.05.2020	RE-ISSUED FOR CONSTRUCTION		NA				DESIGN		J.COX	29.05.20					
											CONTRACTOR		DESIGN CHECK		E.AMORES	29.05.20					
											CO-ORDINATE SYSTEM MGA ZONE 56		HEIGHT DATUM AHD				DESIGN MNGR	P.RAKKAR	29.05.20		
															PROJECT MNGR		P.RAKKAR	29.05.20			

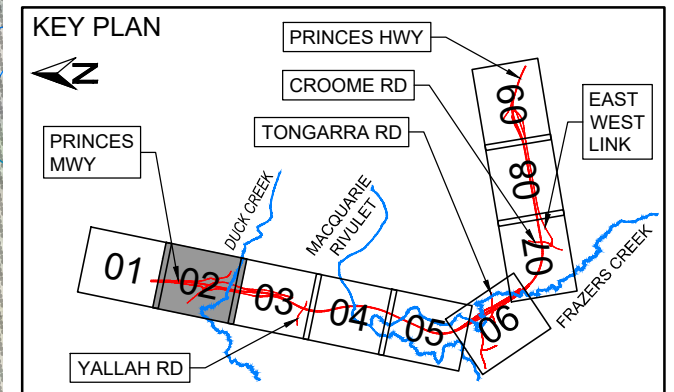
ACCEPTED FOR CONSTRUCTION



	0	5	10	15	20	25	30	35	40	45	50mm ON A3 SIZE ORIGINAL
--	---	---	----	----	----	----	----	----	----	----	--------------------------



	PREMISE BOUNDARY
	ROAD ALIGNMENT
	WATERCOURSE
	ANCILLARY FACILITY SITE
	SENSITIVE RECEIVER
	DUST MONITORING GAUGE LOCATION
	REAL TIME MONITORING SITE
	NOISE MONITORING LOCATION



ACCEPTED FOR CONSTRUCTION

DRAWING FILE LOCATION / NAME X:\Projects\D0037 Albion Park Rail Bypass\AutoCAD\Drawings\EN Environmental\A0037-DRG-EN-01-1002_003.dwg										DESIGN LOT CODE CE		DESIGN MODEL FILE(S) USED FOR DOCUMENTATION OF THIS DRAWING						PLOT DATE / TIME 29 May 2020 12:10:54		PLOT BY andre		CLIENT		WOLLONGONG CITY COUNCIL AND SHELLHARBOUR CITY COUNCIL M1 PRINCES MOTORWAY ALBION PARK RAIL BYPASS STG 2 - PRINCES MWY BETWEEN YALLAH & OAK FLATS ENVIRONMENTAL SENSITIVE AREA PLANS SHEET 2 OF 9				A3	
EXTERNAL REFERENCE FILES										REV		DATE		AMENDMENT / REVISION DESCRIPTION				WVR No.		APPROVAL		SCALES ON A3 SIZE DRAWING				DRAWINGS / DESIGN PREPARED BY			
<div><div><div>x-gp-key-plan_5000</div><div>x-gp-key-plan_1000</div><div>x-gp-key-plan_2000</div><div>x-gp-key-plan_3000</div><div>x-gp-key-plan_4000</div><div>x-gp-key-plan_5000</div><div>x-gp-key-plan_6000</div><div>x-gp-key-plan_7000</div><div>x-gp-key-plan_8000</div><div>x-gp-key-plan_9000</div><div>x-gp-key-plan_10000</div><div>x-gp-key-plan_11000</div><div>x-gp-key-plan_12000</div><div>x-gp-key-plan_13000</div><div>x-gp-key-plan_14000</div><div>x-gp-key-plan_15000</div><div>x-gp-key-plan_16000</div><div>x-gp-key-plan_17000</div><div>x-gp-key-plan_18000</div><div>x-gp-key-plan_19000</div><div>x-gp-key-plan_20000</div><div>x-gp-key-plan_21000</div><div>x-gp-key-plan_22000</div><div>x-gp-key-plan_23000</div><div>x-gp-key-plan_24000</div><div>x-gp-key-plan_25000</div><div>x-gp-key-plan_26000</div><div>x-gp-key-plan_27000</div><div>x-gp-key-plan_28000</div><div>x-gp-key-plan_29000</div><div>x-gp-key-plan_30000</div><div>x-gp-key-plan_31000</div><div>x-gp-key-plan_32000</div><div>x-gp-key-plan_33000</div><div>x-gp-key-plan_34000</div><div>x-gp-key-plan_35000</div><div>x-gp-key-plan_36000</div><div>x-gp-key-plan_37000</div><div>x-gp-key-plan_38000</div><div>x-gp-key-plan_39000</div><div>x-gp-key-plan_40000</div><div>x-gp-key-plan_41000</div><div>x-gp-key-plan_42000</div><div>x-gp-key-plan_43000</div><div>x-gp-key-plan_44000</div><div>x-gp-key-plan_45000</div><div>x-gp-key-plan_46000</div><div>x-gp-key-plan_47000</div><div>x-gp-key-plan_48000</div><div>x-gp-key-plan_49000</div><div>x-gp-key-plan_50000</div><div>x-gp-key-plan_51000</div><div>x-gp-key-plan_52000</div><div>x-gp-key-plan_53000</div><div>x-gp-key-plan_54000</div><div>x-gp-key-plan_55000</div><div>x-gp-key-plan_56000</div><div>x-gp-key-plan_57000</div><div>x-gp-key-plan_58000</div><div>x-gp-key-plan_59000</div><div>x-gp-key-plan_60000</div><div>x-gp-key-plan_61000</div><div>x-gp-key-plan_62000</div><div>x-gp-key-plan_63000</div><div>x-gp-key-plan_64000</div><div>x-gp-key-plan_65000</div><div>x-gp-key-plan_66000</div><div>x-gp-key-plan_67000</div><div>x-gp-key-plan_68000</div><div>x-gp-key-plan_69000</div><div>x-gp-key-plan_70000</div><div>x-gp-key-plan_71000</div><div>x-gp-key-plan_72000</div><div>x-gp-key-plan_73000</div><div>x-gp-key-plan_74000</div><div>x-gp-key-plan_75000</div><div>x-gp-key-plan_76000</div><div>x-gp-key-plan_77000</div><div>x-gp-key-plan_78000</div><div>x-gp-key-plan_79000</div><div>x-gp-key-plan_80000</div><div>x-gp-key-plan_81000</div><div>x-gp-key-plan_82000</div><div>x-gp-key-plan_83000</div><div>x-gp-key-plan_84000</div><div>x-gp-key-plan_85000</div><div>x-gp-key-plan_86000</div><div>x-gp-key-plan_87000</div><div>x-gp-key-plan_88000</div><div>x-gp-key-plan_89000</div><div>x-gp-key-plan_90000</div><div>x-gp-key-plan_91000</div><div>x-gp-key-plan_92000</div><div>x-gp-key-plan_93000</div><div>x-gp-key-plan_94000</div><div>x-gp-key-plan_95000</div><div>x-gp-key-plan_96000</div><div>x-gp-key-plan_97000</div><div>x-gp-key-plan_98000</div><div>x-gp-key-plan_99000</div><div>x-gp-key-plan_100000</div><div>x-gp-key-plan_101000</div><div>x-gp-key-plan_102000</div><div>x-gp-key-plan_103000</div><div>x-gp-key-plan_104000</div><div>x-gp-key-plan_105000</div><div>x-gp-key-plan_106000</div><div>x-gp-key-plan_107000</div><div>x-gp-key-plan_108000</div><div>x-gp-key-plan_109000</div><div>x-gp-key-plan_110000</div><div>x-gp-key-plan_111000</div><div>x-gp-key-plan_112000</div><div>x-gp-key-plan_113000</div><div>x-gp-key-plan_114000</div><div>x-gp-key-plan_115000</div><div>x-gp-key-plan_116000</div><div>x-gp-key-plan_117000</div><div>x-gp-key-plan_118000</div><div>x-gp-key-plan_119000</div><div>x-gp-key-plan_120000</div><div>x-gp-key-plan_121000</div><div>x-gp-key-plan_122000</div><div>x-gp-key-plan_123000</div><div>x-gp-key-plan_124000</div><div>x-gp-key-plan_125000</div><div>x-gp-key-plan_126000</div><div>x-gp-key-plan_127000</div><div>x-gp-key-plan_128000</div><div>x-gp-key-plan_129000</div><div>x-gp-key-plan_130000</div><div>x-gp-key-plan_131000</div><div>x-gp-key-plan_132000</div><div>x-gp-key-plan_133000</div><div>x-gp-key-plan_134000</div><div>x-gp-key-plan_135000</div><div>x-gp-key-plan_136000</div><div>x-gp-key-plan_137000</div><div>x-gp-key-plan_138000</div><div>x-gp-key-plan_139000</div><div>x-gp-key-plan_140000</div><div>x-gp-key-plan_141000</div><div>x-gp-key-plan_142000</div><div>x-gp-key-plan_143000</div><div>x-gp-key-plan_144000</div><div>x-gp-key-plan_145000</div><div>x-gp-key-plan_146000</div><div>x-gp-key-plan_147000</div><div>x-gp-key-plan_148000</div><div>x-gp-key-plan_149000</div><div>x-gp-key-plan_150000</div><div>x-gp-key-plan_151000</div><div>x-gp-key-plan_152000</div><div>x-gp-key-plan_153000</div><div>x-gp-key-plan_154000</div><div>x-gp-key-plan_155000</div><div>x-gp-key-plan_156000</div><div>x-gp-key-plan_157000</div><div>x-gp-key-plan_158000</div><div>x-gp-key-plan_159000</div><div>x-gp-key-plan_160000</div><div>x-gp-key-plan_161000</div><div>x-gp-key-plan_162000</div><div>x-gp-key-plan_163000</div><div>x-gp-key-plan_164000</div><div>x-gp-key-plan_165000</div><div>x-gp-key-plan_166000</div><div>x-gp-key-plan_167000</div><div>x-gp-key-plan_168000</div><div>x-gp-key-plan_169000</div><div>x-gp-key-plan_170000</div><div>x-gp-key-plan_171000</div><div>x-gp-key-plan_172000</div><div>x-gp-key-plan_173000</div><div>x-gp-key-plan_174000</div><div>x-gp-key-plan_175000</div><div>x-gp-key-plan_176000</div><div>x-gp-key-plan_177000</div><div>x-gp-key-plan_178000</div><div>x-gp-key-plan_179000</div><div>x-gp-key-plan_180000</div><div>x-gp-key-plan_181000</div><div>x-gp-key-plan_182000</div><div>x-gp-key-plan_183000</div><div>x-gp-key-plan_184000</div><div>x-gp-key-plan_185000</div><div>x-gp-key-plan_186000</div><div>x-gp-key-plan_187000</div><div>x-gp-key-plan_188000</div><div>x-gp-key-plan_189000</div><div>x-gp-key-plan_190000</div><div>x-gp-key-plan_191000</div><div>x-gp-key-plan_192000</div><div>x-gp-key-plan_193000</div><div>x-gp-key-plan_194000</div><div>x-gp-key-plan_195000</div><div>x-gp-key-plan_196000</div><div>x-gp-key-plan_197000</div><div>x-gp-key-plan_198000</div><div>x-gp-key-plan_199000</div><div>x-gp-key-plan_200000</div><div>x-gp-key-plan_201000</div><div>x-gp-key-plan_202000</div><div>x-gp-key-plan_203000</div><div>x-gp-key-plan_204000</div><div>x-gp-key-plan_205000</div><div>x-gp-key-plan_206000</div><div>x-gp-key-plan_207000</div><div>x-gp-key-plan_208000</div><div>x-gp-key-plan_209000</div><div>x-gp-key-plan_210000</div><div>x-gp-key-plan_211000</div><div>x-gp-key-plan_212000</div><div>x-gp-key-plan_213000</div><div>x-gp-key-plan_214000</div><div>x-gp-key-plan_215000</div><div>x-gp-key-plan_216000</div><div>x-gp-key-plan_217000</div><div>x-gp-key-plan_218000</div><div>x-gp-key-plan_219000</div><div>x-gp-key-plan_220000</div><div>x-gp-key-plan_221000</div><div>x-gp-key-plan_222000</div><div>x-gp-key-plan_223000</div><div>x-gp-key-plan_224000</div><div>x-gp-key-plan_225000</div><div>x-gp-key-plan_226000</div><div>x-gp-key-plan_227000</div><div>x-gp-key-plan_228000</div><div>x-gp-key-plan_229000</div><div>x-gp-key-plan_230000</div><div>x-gp-key-plan_231000</div><div>x-gp-key-plan_232000</div><div>x-gp-key-plan_233000</div><div>x-gp-key-plan_234000</div><div>x-gp-key-plan_235000</div><div>x-gp-key-plan_236000</div><div>x-gp-key-plan_237000</div><div>x-gp-key-plan_238000</div><div>x-gp-key-plan_239000</div><div>x-gp-key-plan_240000</div><div>x-gp-key-plan_241000</div><div>x-gp-key-plan_242000</div><div>x-gp-key-plan_243000</div><div>x-gp-key-plan_244000</div><div>x-gp-key-plan_245000</div><div>x-gp-key-plan_246000</div><div>x-gp-key-plan_247000</div><div>x-gp-key-plan_248000</div><div>x-gp-key-plan_249000</div><div>x-gp-key-plan_250000</div><div>x-gp-key-plan_251000</div><div>x-gp-key-plan_252000</div><div>x-gp-key-plan_253000</div><div>x-gp-key-plan_254000</div><div>x-gp-key-plan_255000</div><div>x-gp-key-plan_256000</div><div>x-gp-key-plan_257000</div><div>x-gp-key-plan_258000</div><div>x-gp-key-plan_259000</div><div>x-gp-key-plan_260000</div><div>x-gp-key-plan_261000</div><div>x-gp-key-plan_262000</div><div>x-gp-key-plan_263000</div><div>x-gp-key-plan_264000</div><div>x-gp-key-plan_265000</div><div>x-gp-key-plan_266000</div><div>x-gp-key-plan_267000</div><div>x-gp-key-plan_268000</div><div>x-gp-key-plan_269000</div><div>x-gp-key-plan_270000</div><div>x-gp-key-plan_271000</div><div>x-gp-key-plan_272000</div><div>x-gp-key-plan_273000</div><div>x-gp-key-plan_274000</div><div>x-gp-key-plan_275000</div><div>x-gp-key-plan_276000</div><div>x-gp-key-plan_277000</div><div>x-gp-key-plan_278000</div><div>x-gp-key-plan_279000</div><div>x-gp-key-plan_280000</div><div>x-gp-key-plan_281000</div><div>x-gp-key-plan_282000</div><div>x-gp-key-plan_283000</div><div>x-gp-key-plan_284000</div><div>x-gp-key-plan_285000</div><div>x-gp-key-plan_286000</div><div>x-gp-key-plan_287000</div><div>x-gp-key-plan_288000</div><div>x-gp-key-plan_289000</div><div>x-gp-key-plan_290000</div><div>x-gp-key-plan_291000</div><div>x-gp-key-plan_292000</div><div>x-gp-key-plan_293000</div><div>x-gp-key-plan_294000</div><div>x-gp-key-plan_295000</div><div>x-gp-key-plan_296000</div><div>x-gp-key-plan_297000</div><div>x-gp-key-plan_298000</div><div>x-gp-key-plan_299000</div><div>x-gp-key-plan_300000</div><div>x-gp-key-plan_301000</div><div>x-gp-key-plan_302000</div><div>x-gp-key-plan_303000</div><div>x-gp-key-plan_304000</div><div>x-gp-key-plan_305000</div><div>x-gp-key-plan_306000</div><div>x-gp-key-plan_307000</div><div>x-gp-key-plan_308000</div><div>x-gp-key-plan_309000</div><div>x-gp-key-plan_310000</div><div>x-gp-key-plan_311000</div><div>x-gp-key-plan_312000</div><div>x-gp-key-plan_313000</div><div>x-gp-key-plan_314000</div><div>x-gp-key-plan_315000</div><div>x-gp-key-plan_316000</div><div>x-gp-key-plan_317000</div><div>x-gp-key-plan_318000</div><div>x-gp-key-plan_319000</div><div>x-gp-key-plan_320000</div><div>x-gp-key-plan_321000</div><div>x-gp-key-plan_322000</div><div>x-gp-key-plan_323000</div><div>x-gp-key-plan_324000</div><div>x-gp-key-plan_325000</div><div>x-gp-key-plan_326000</div><div>x-gp-key-plan_327000</div><div>x-gp-key-plan_328000</div><div>x-gp-key-plan_329000</div><div>x-gp-key-plan_330000</div><div>x-gp-key-plan_331000</div><div>x-gp-key-plan_332000</div><div>x-gp-key-plan_333000</div><div>x-gp-key-plan_334000</div><div>x-gp-key-plan_335000</div><div>x-gp-key-plan_336000</div><div>x-gp-key-plan_337000</div><div>x-gp-key-plan_338000</div><div>x-gp-key-plan_339000</div><div>x-gp-key-plan_340000</div><div>x-gp-key-plan_341000</div><div>x-gp-key-plan_342000</div><div>x-gp-key-plan_343000</div><div>x-gp-key-plan_344000</div><div>x-gp-key-plan_345000</div><div>x-gp-key-plan_346000</div><div>x-gp-key-plan_347000</div><div>x-gp-key-plan_348000</div><div>x-gp-key-plan_349000</div><div>x-gp-key-plan_350000</div><div>x-gp-key-plan_351000</div><div>x-gp-key-plan_352000</div><div>x-gp-key-plan_353000</div><div>x-gp-key-plan_354000</div><div>x-gp-key-plan_355000</div><div>x-gp-key-plan_356000</div><div>x-gp-key-plan_357000</div><div>x-gp-key-plan_358000</div><div>x-gp-key-plan_359000</div><div>x-gp-key-plan_360000</div><div>x-gp-key-plan_361000</div><div>x-gp-key-plan_362000</div><div>x-gp-key-plan_363000</div><div>x-gp-key-plan_364000</div><div>x-gp-key-plan_365000</div><div>x-gp-key-plan_366000</div><div>x-gp-key-plan_367000</div><div>x-gp-key-plan_368000</div><div>x-gp-key-plan_369000</div><div>x-gp-key-plan_370000</div><div>x-gp-key-plan_371000</div><div>x-gp-key-plan_372000</div><div>x-gp-key-plan_373000</div><div>x-gp-key-plan_374000</div><div>x-gp-key-plan_375000</div><div>x-gp-key-plan_376000</div><div>x-gp-key-plan_377000</div><div>x-gp-key-plan_378000</div><div>x-gp-key-plan_379000</div><div>x-gp-key-plan_380000</div><div>x-gp-key-plan_381000</div><div>x-gp-key-plan_382000</div><div>x-gp-key-plan_383000</div><div>x-gp-key-plan_384000</div><div>x-gp-key-plan_385000</div><div>x-gp-key-plan_386000</div><div>x-gp-key-plan_387000</div><div>x-gp-key-plan_388000</div><div>x-gp-key-plan_389000</div><div>x-gp-key-plan_390000</div><div>x-gp-key-plan_391000</div><div>x-gp-key-plan_392000</div><div>x-gp-key-plan_393000</div><div>x-gp-key-plan_394000</div><div>x-gp-key-plan_395000</div><div>x-gp-key-plan_396000</div><div>x-gp-key-plan_397000</div><div>x-gp-key-plan_398000</div><div>x-gp-key-plan_399000</div><div>x-gp-key-plan_400000</div><div>x-gp-key-plan_401000</div><div>x-gp-key-plan_402000</div><div>x-gp-key-plan_403000</div><div>x-gp-key-plan_404000</div><div>x-gp-key-plan_405000</div><div>x-gp-key-plan_406000</div><div>x-gp-key-plan_407000</div><div>x-gp-key-plan_408000</div><div>x-gp-key-plan_409000</div><div>x-gp-key-plan_410000</div><div>x-gp-key-plan_411000</div><div>x-gp-key-plan_412000</div><div>x-gp-key-plan_413000</div><div>x-gp-key-plan_414000</div><div>x-gp-key-plan_415000</div><div>x-gp-key-plan_416000</div><div>x-gp-key-plan_417000</div><div>x-gp-key-plan_418000</div><div>x-gp-key-plan_419000</div><div>x-gp-key-plan_420000</div><div>x-gp-key-plan_421000</div><div>x-gp-key-plan_422000</div><div>x-gp-key-plan_423000</div><div>x-gp-key-plan_424000</div><div>x-gp-key-plan_425000</div><div>x-gp-key-plan_426000</div><div>x-gp-key-plan_427000</div><div>x-gp-key-plan_428000</div><div>x-gp-key-plan_429000</div><div>x-gp-key-plan_430000</div><div>x-gp-key-plan_431000</div><div>x-gp-key-plan_432000</div><div>x-gp-key-plan_433000</div><div>x-gp-key-plan_434000</div><div>x-gp-key-plan_435000</div><div>x-gp-key-plan_436000</div><div>x-gp-key-plan_437000</div><div>x-gp-key-plan_438000</div><div>x-gp-key-plan_439000</div><div>x-gp-key-plan_440000</div><div>x-gp-key-plan_441000</div><div>x-gp-key-plan_442000</div><div>x-gp-key-plan_443000</div><div>x-gp-key-plan_444000</div><div>x-gp-key-plan_445000</div><div>x-gp-key-plan_446000</div><div>x-gp-key-plan_447000</div><div>x-gp-key-plan_448000</div><div>x-gp-key-plan_449000</div><div>x-gp-key-plan_450000</div><div>x-gp-key-plan_451000</div><div>x-gp-key-plan_452000</div><div>x-gp-key-plan_453000</div><div>x-gp-key-plan_454000</div><div>x-gp-key-plan_455000</div><div>x-gp-key-plan_456000</div><div>x-gp-key-plan_457000</div><div>x-gp-key-plan_458000</div><div>x-gp-key-plan_459000</div><div>x-gp-key-plan_460000</div><div>x-gp-key-plan_461000</div><div>x-gp-key-plan_462000</div><div>x-gp-key-plan_463000</div><div>x-gp-key-plan_464000</div><div>x-gp-key-plan_465000</div><div>x-gp-key-plan_466000</div><div>x-gp-key-plan_467000</div><div>x-gp-key-plan_468000</div><div>x-gp-key-plan_469000</div><div>x-gp-key-plan_470000</div><div>x-gp-key-plan_471000</div><div>x-gp-key-plan_472000</div><div>x-gp-key-plan_473000</div><div>x-gp-key-plan_474000</div><div>x-gp-key-plan_475000</div><div>x-gp-key-plan_476000</div><div>x-gp-key-plan_477000</div><div>x-gp-key-plan_478000</div><div>x-gp-key-plan_479000</div><div>x-gp-key-plan_480000</div><div>x-gp-key-plan_481000</div><div>x-gp-key-plan_482000</div><div>x-gp-key-plan_483000</div><div>x-gp-key-plan_484000</div><div>x-gp-key-plan_485000</div><div>x-gp-key-plan_486000</div><div>x-gp-key-plan_487000</div><div>x-gp-key-plan_488000</div><div>x-gp-key-plan_489000</div><div>x-gp-key-plan_490000</div><div>x-gp-key-plan_491000</div><div>x-gp-key-plan_492000</div><div>x-gp-key-plan_493000</div><div>x-gp-key-plan_494000</div><div>x-gp-key-plan_495000</div><div>x-gp-key-plan_496000</div><div>x-gp-key-plan_497000</div><div>x-gp-key-plan_498000</div><div>x-gp-key-plan_499000</div><div>x-gp-key-plan_500000</div><div>x-gp-key-plan_501000</div><div>x-gp-key-plan_502000</div><div>x-gp-key-plan_503000</div><div>x-gp-key-plan_504000</div><div>x-gp-key-plan_505000</div><div>x-gp-key-plan_506000</div><div>x-gp-key-plan_507000</div><div>x-gp-key-plan_508000</div><div>x-gp-key-plan_509000</div><div>x-gp-key-plan_510000</div><div>x-gp-key-plan_511000</div><div>x-gp-key-plan_512000</div><div>x-gp-key-plan_513000</div><div>x-gp-key-plan_514000</div><div>x-gp-key-plan_515000</div><div>x-gp-key-plan_516000</div><div>x-gp-key-plan_517000</div><div>x-gp-key-plan_518000</div><div>x-gp-key-plan_519000</div><div>x-gp-key-plan_520000</div><div>x-gp-key-plan_521000</div><div>x-gp-key-plan_522000</div><div>x-gp-key-plan_523000</div><div>x-gp-key-plan_524000</div><div>x-gp-key-plan_525000</div><div>x-gp-key-plan_526000</div><div>x-gp-key-plan_527000</div><div>x-gp-key-plan_528000</div><div>x-gp-key-plan_529000</div><div>x-gp-key-plan_530000</div><div>x-gp-key-plan_531000</div><div>x-gp-key-plan_532000</div><div>x-gp-key-plan_533000</div><div>x-gp-key-plan_534000</div><div>x-gp-key-plan_535000</div><div>x-gp-key-plan_536000</div><div>x-gp-key-plan_537000</div><div>x-gp-key-plan_538000</div><div>x-gp-key-plan_539000</div><div>x-gp-key-plan_540000</div><div>x-gp-key-plan_541000</div><div>x-gp-key-plan_542000</div><div>x-gp-key-plan_543000</div><div>x-gp-key-plan_544000</div><div>x-gp-key-plan_545000</div><div>x-gp-key-plan_546000</div><div>x-gp-key-plan_547000</div><div>x-gp-key-plan_548000</div><div>x-gp-key-plan_549000</div><div>x-gp-key-plan_550000</div><div>x-gp-key-plan_551000</div><div>x-gp-key-plan_552000</div><div>x-gp-key-plan_553000</div><div>x-gp-key-plan_554000</div><div>x-gp-key-plan_555000</div><div>x-gp-key-plan_556000</div><div>x-gp-key-plan_557000</div><div>x-gp-key-plan_558000</div><div>x-gp-key-plan_559000</div><div>x-gp-key-plan_560000</div><div>x-gp-key-plan_561000</div><div>x-gp-key-plan_562000</div><div>x-gp-key-plan_563000</div><div>x-gp-key-plan_564000</div><div>x-gp-key-plan_565000</div><div>x-gp-key-plan_566000</div><div>x-gp-key-plan_567000</div><div>x-gp-key-plan_568000</div><div>x-gp-key-plan_569000</div><div>x-gp-key-plan_570000</div><div>x-gp-key-plan_571000</div><div>x-gp-key-plan_572000</div><div>x-gp-key-plan_573000</div><div>x-gp-key-plan_574000</div><div>x-gp-key-plan_575000</div><div>x-gp-key-plan_576000</div><div>x-gp-key-plan_577000</div><div>x-gp-key-plan_578000</div><div>x-gp-key-plan_579000</div><div>x-gp-key-plan_580000</div><div>x-gp-key-plan_581000</div><div>x-gp-key-plan_582000</div><div>x-gp-key-plan_583000</div><div>x-gp-key-plan_584000</div><div>x-gp-key-plan_585000</div><div>x-gp-key-plan_586000</div><div>x-gp-key-plan_587000</div><div>x-gp-key-plan_588000</div><div>x-gp-key-plan_589000</div><div>x-gp-key-plan_590000</div><div>x-gp-key-plan_591000</div><div>x-gp-key-plan_592000</div><div>x-gp-key-plan_593000</div><div>x-gp-key-plan_594000</div><div>x-gp-key-plan_595000</div><div>x-gp-key-plan_596000</div><div>x-gp-key-plan_597000</div><div>x-gp-key-plan_598000</div><div>x-gp-key-plan_599000</div><div>x-gp-key-plan_600000</div><div>x-gp-key-plan_601000</div><div>x-gp-key-plan_602000</div><div>x-gp-key-plan_603000</div><div>x-gp-key-plan_604000</div><div>x-gp-key-plan_605000</div><div>x-gp-key-plan_606000</div><div>x-gp-key-plan_607000</div><div>x-gp-key-plan_608000</div><div>x-gp-key-plan_609000</div><div>x-gp-key-plan_610000</div><div>x-gp-key-plan_611000</div><div>x-gp-key-plan_612000</div><div>x-gp-key-plan_613000</div><div>x-gp-key-plan_614000</div><div>x-gp-key-plan_615000</div><div>x-gp-key-plan_616000</div><div>x-gp-key-plan_617000</div><div>x-gp-key-plan_618000</div><div>x-gp-key-plan_619000</div><div>x-gp-key-plan_620000</div><div>x-gp-key-plan_621000</div><div>x-gp-key-plan_622000</div><div>x-gp-key-plan_623000</div><div>x-gp-key-plan_624000</div><div>x-gp-key-plan_625000</div><div>x-gp-key-plan_626000</div><div>x-gp-key-plan_627000</div><div>x-gp-key-plan_628000</div><div>x-gp-key-plan_629000</div><div>x-gp-key-plan_630000</div><div>x-gp-key-plan_631000</div><div>x-gp-key-plan_632000</div><div>x-gp-key-plan_633000</div><div>x-gp-key-plan_634000</div><div>x-gp-key-plan_635000</div><div>x-gp-key-plan_636000</div><div>x-gp-key-plan_637000</div><div>x-gp-key-plan_638000</div><div>x-gp-key-plan_639000</div><div>x-gp-key-plan_640000</div><div>x-gp-key-plan_641000</div><div>x-gp-key-plan_642000</div><div>x-gp-key-plan_643000</div><div>x-gp-key-plan_644000</div><div>x-gp-key-plan_645000</div><div>x-gp-key-plan_646000</div><div>x-gp-key-plan_647000</div><div>x-gp-key-plan_648000</div><div>x-gp-key-plan_649000</div><div>x-gp-key-plan_650000</div><div>x-gp-key-plan_651000</div><div>x-gp-key-plan_652000</div><div>x-gp-key-plan_653000</div><div>x-gp-key-plan_654000</div><div>x-gp-key-plan_655000</div><div>x-gp-key-plan_656000</div><div>x-gp-key-plan_657000</div><div>x-gp-key-plan_658000</div><div>x-gp-key-plan_659000</div><div>x-gp-key-plan_660000</div><div>x-gp-key-plan_661000</div><div>x-gp-key-plan_662000</div><div>x-gp-key-plan_663000</div><div>x-gp-key-plan_664000</div><div>x-gp-key-plan_665000</div><div>x-gp-key-plan_666000</div><div>x-gp-key-plan_667000</div><div>x-gp-key-plan_668000</div><div>x-gp-key-plan_669000</div><div>x-gp-key-plan_670000</div><div>x-gp-key-plan_671000</div><div>x-gp-key-plan_672000</div><div>x-gp-key-plan_673000</div><div>x-gp-key-plan_674000</div><div>x-gp-key-plan_675000</div><div>x-gp-key-plan_676000</div><div>x-gp-key-plan_677000</div><div>x-gp-key-plan_678000</div><div>x-gp-key-plan_679000</div><div>x-gp-key-plan_680000</div><div>x-gp-key-plan_681000</div><div>x-gp-key-plan_682000</div><div>x-gp-key-plan_683000</div><div>x-gp-key-plan_684000</div><div>x-gp-key-plan_685000</div><div>x-gp-key-plan_686000</div><div>x-gp-key-plan_687000</div><div>x-gp-key-plan_688000</div><div>x-gp-key-plan_689000</div><div>x-gp-key-plan_690000</div><div>x-gp-key-plan_691000</div><div>x-gp-key-plan_692000</div><div>x-gp-key-plan_693000</div><div>x-gp-key-plan_694000</div><div>x-gp-key-plan_695000</div><div>x-gp-key-plan_696000</div><div>x-gp-key-plan_697000</div><div>x-gp-key-plan_698000</div><div>x-gp-key-plan_699000</div><div>x-gp-key-plan_700000</div><div>x-gp-key-plan_701000</div><div>x-gp-key-plan_702000</div><div>x-gp-key-plan_703000</div><div>x-gp-key-plan_704000</div><div>x-gp-key-plan_705000</div><div>x-gp-key-plan_706000</div><div>x-gp-key-plan_707000</div><div>x-gp-key-plan_708000</div><div>x-gp-key-plan_709000</div><div>x-gp-key-plan_710000</div><div>x-gp-key-plan_711000</div><div>x-gp-key-plan_712000</div><div>x-gp-key-plan_713000</div><div>x-gp-key-plan_714000</div><div>x-gp-key-plan_715000</div><div>x-gp-key-plan_716000</div><div>x-gp-key-plan_717000</div><div>x-gp-key-plan_718000</div><div>x-gp-key-plan_719000</div><div>x-gp-key-plan_720000</div><div>x-gp-key-plan_721000</div><div>x-gp-key-plan_722000</div><div>x-gp-key-plan_723000</div><div>x-gp-key-plan_724000</div><div>x-gp-key-plan_725000</div><div>x-gp-key-plan_726000</div><div>x-gp-key-plan_727000</div><div>x-gp-key-plan_728000</div><div>x-gp-key-plan_729000</div><div>x-gp-key-plan_730000</div><div>x-gp-key-plan_731000</div><div>x-gp-key-plan_732000</div><div>x-gp-key-plan_733000</div><div>x-gp-key-plan_734000</div><div>x-gp-key-plan_735000</div><div>x-gp-key-plan_736000</div><div>x-gp-key-plan_737000</div><div>x-gp-key-plan_738000</div><div>x-gp-key-plan_739000</div><div>x-gp-key-plan_740000</div><div>x-gp-key-plan_741000</div><div>x-gp-key-plan_742000</div><div>x-gp-key-plan_743000</div><div>x-gp-key-plan_744000</div><div>x-gp-key-plan_745000</div><div>x-gp-key-plan_746000</div><div>x-gp-key-plan_747000</div><div>x-gp-key-plan_748000</div><div>x-gp-key-plan_749000</div><div>x-gp-key-plan_750000</div><div>x-gp-key-plan_751000</div><div>x-gp-key-plan_752000</div><div>x-gp-key-plan_753000</div><div>x-gp-key-plan_754000</div><div>x-gp-key-plan_755000</div><div>x-gp-key-plan_756000</div></div></div>																													





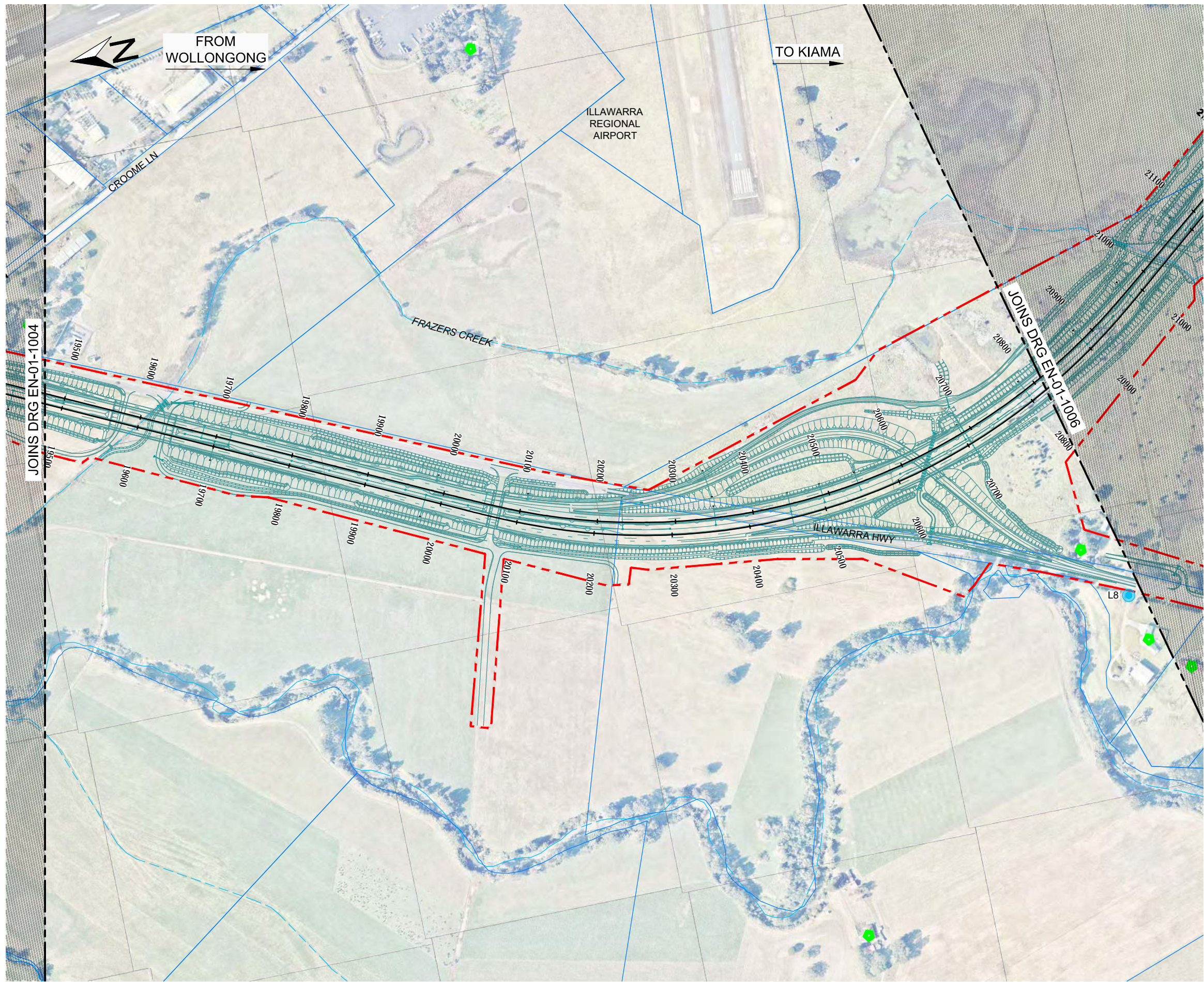






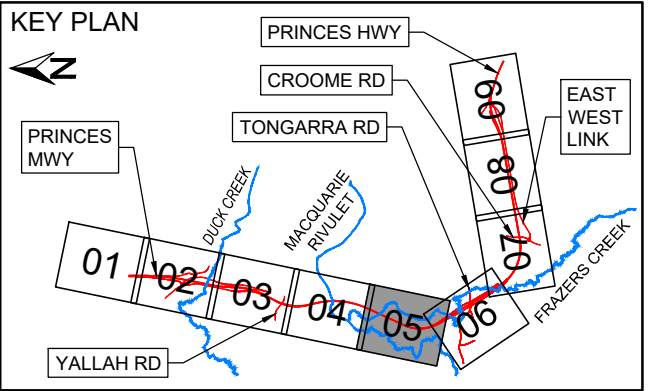
THIS DRAWING MAY BE PREPARED IN COLOUR AND MAY BE INCOMPLETE IF COPIED

50mm ON A3 SIZE ORIGINAL



**LEGEND**

- PREMISE BOUNDARY
- ROAD ALIGNMENT
- WATERCOURSE
- ANCILLARY FACILITY SITE
- SENSITIVE RECEIVER
- DUST MONITORING GAUGE LOCATION
- REAL TIME MONITORING SITE
- NOISE MONITORING LOCATION

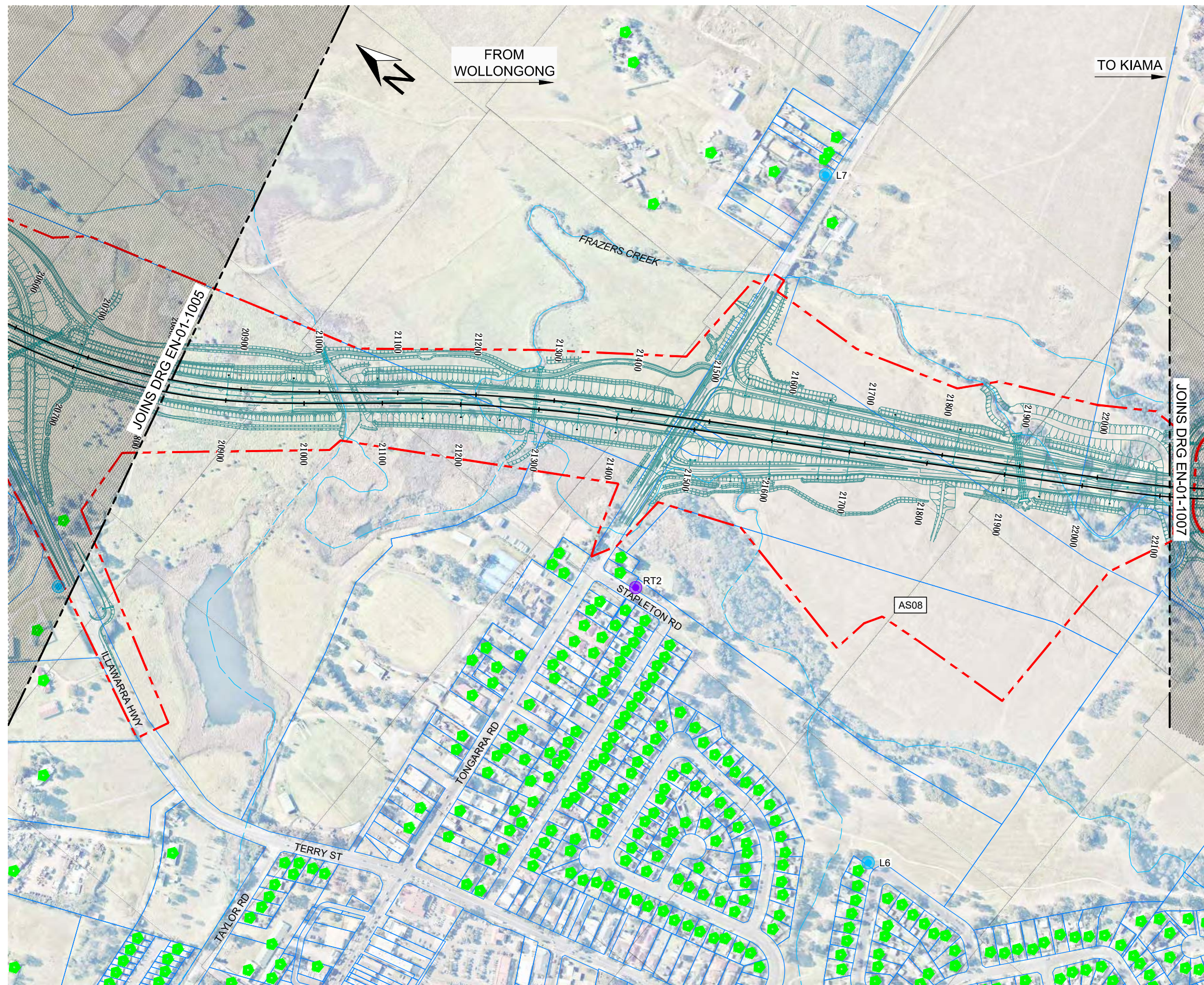


ACCEPTED FOR CONSTRUCTION









DRAWING FILE LOCATION / NAME X:\Projects\00037 Albion Park Rail Bypass\AutoCAD\Drawings\EN Environmental\00037-DRG-EN-01-1005_003.dwg					DESIGN LOT CODE CE		DESIGN MODEL FILE(S) USED FOR DOCUMENTATION OF THIS DRAWING				PLOT DATE / TIME 29 May 2020 12:13:59		PLOT BY andre		CLIENT		WOLLONGONG CITY COUNCIL AND SHELLHARBOUR CITY COUNCIL		A3																	
EXTERNAL REFERENCE FILES					REV		DATE		AMENDMENT / REVISION DESCRIPTION				WVR No.		APPROVAL		SCALES ON A3 SIZE DRAWING				DRAWINGS / DESIGN PREPARED BY				TITLE		NAME		DATE		<div><div>Transport Roads &amp; Maritime Services</div></div> <div>PREPARED FOR</div> <div>RMS REGISTRATION No. <b>DS2018/001756</b></div> <div>ISSUE STATUS ACCEPTED FOR CONSTRUCTION</div> <div>EDMS No.</div> <div>SHEET No. EN-01-1005</div>		PART 1		ISSU	
<div><div>x-go-key-plan_5000</div><div>x-go-key-plan_5000</div><div>x-go-key-plan_5000</div><div>x-go-key-plan_5000</div><div>x-go-key-plan_5000</div><div>x-go-key-plan_5000</div><div>x-go-key-plan_5000</div><div>x-go-key-plan_5000</div><div>x-go-key-plan_5000</div><div>x-go-key-plan_5000</div><div>x-go-key-plan_5000</div><div>x-go-key-plan_5000</div><div>x-go-key-plan_5000</div><div>x-go-key-plan_5000</div><div>x-go-key-plan_5000</div><div>x-go-key-plan_5000</div><div>x-go-key-plan_5000</div><div>x-go-key-plan_5000</div><div>x-go-key-plan_5000</div><div>x-go-key-plan_5000</div><div>x-go-key-plan_5000</div><div>x-go-key-plan_5000</div><div>x-go-key-plan_5000</div><div>x-go-key-plan_5000</div><div>x-go-key-plan_5000</div><div>x-go-key-plan_5000</div><div>x-go-key-plan_5000</div><div>x-go-key-plan_5000</div><div>x-go-key-plan_5000</div><div>x-go-key-plan_5000</div><div>x-go-key-plan_5000</div><div>x-go-key-plan_5000</div><div>x-go-key-plan_5000</div><div>x-go-key-plan_5000</div><div>x-go-key-plan_5000</div><div>x-go-key-plan_5000</div><div>x-go-key-plan_5000</div><div>x-go-key-plan_5000</div><div>x-go-key-plan_5000</div><div>x-go-key-plan_5000</div><div>x-go-key-plan_5000</div><div>x-go-key-plan_5000</div><div>x-go-key-plan_5000</div><div>x-go-key-plan_5000</div><div>x-go-key-plan_5000</div><div>x-go-key-plan_5000</div><div>x-go-key-plan_5000</div><div>x-go-key-plan_5000</div><div>x-go-key-plan_5000</div><div>x-go-key-plan_5000</div><div>x-go-key-plan_5000</div><div>x-go-key-plan_5000</div><div>x-go-key-plan_5000</div><div>x-go-key-plan_5000</div><div>x-go-key-plan_5000</div><div>x-go-key-plan_5000</div><div>x-go-key-plan_5000</div><div>x-go-key-plan_5000</div><div>x-go-key-plan_5000</div><div>x-go-key-plan_5000</div><div>x-go-key-plan_5000</div><div>x-go-key-plan_5000</div><div>x-go-key-plan_5000</div><div>x-go-key-plan_5000</div><div>x-go-key-plan_5000</div><div>x-go-key-plan_5000</div><div>x-go-key-plan_5000</div><div>x-go-key-plan_5000</div><div>x-go-key-plan_5000</div><div>x-go-key-plan_5000</div><div>x-go-key-plan_5000</div><div>x-go-key-plan_5000</div><div>x-go-key-plan_5000</div><div>x-go-key-plan_5000</div><div>x-go-key-plan_5000</div><div>x-go-key-plan_5000</div><div>x-go-key-plan_5000</div><div>x-go-key-plan_5000</div><div>x-go-key-plan_5000</div><div>x-go-key-plan_5000</div><div>x-go-key-plan_5000</div><div>x-go-key-plan_5000</div><div>x-go-key-plan_5000</div><div>x-go-key-plan_5000</div><div>x-go-key-plan_5000</div><div>x-go-key-plan_5000</div><div>x-go-key-plan_5000</div><div>x-go-key-plan_5000</div><div>x-go-key-plan_5000</div><div>x-go-key-plan_5000</div><div>x-go-key-plan_5000</div><div>x-go-key-plan_5000</div><div>x-go-key-plan_5000</div><div>x-go-key-plan_5000</div><div>x-go-key-plan_5000</div><div>x-go-key-plan_5000</div><div>x-go-key-plan_5000</div><div>x-go-key-plan_5000</div><div>x-go-key-plan_5000</div><div>x-go-key-plan_5000</div><div>x-go-key-plan_5000</div><div>x-go-key-plan_5000</div><div>x-go-key-plan_5000</div><div>x-go-key-plan_5000</div><div>x-go-key-plan_5000</div><div>x-go-key-plan_5000</div><div>x-go-key-plan_5000</div><div>x-go-key-plan_5000</div><div>x-go-key-plan_5000</div><div>x-go-key-plan_5000</div><div>x-go-key-plan_5000</div><div>x-go-key-plan_5000</div><div>x-go-key-plan_5000</div><div>x-go-key-plan_5000</div><div>x-go-key-plan_5000</div><div>x-go-key-plan_5000</div><div>x-go-key-plan_5000</div><div>x-go-key-plan_5000</div><div>x-go-key-plan_5000</div><div>x-go-key-plan_5000</div><div>x-go-key-plan_5000</div><div>x-go-key-plan_5000</div><div>x-go-key-plan_5000</div><div>x-go-key-plan_5000</div><div>x-go-key-plan_5000</div><div>x-go-key-plan_5000</div><div>x-go-key-plan_5000</div><div>x-go-key-plan_5000</div><div>x-go-key-plan_5000</div><div>x-go-key-plan_5000</div><div>x-go-key-plan_5000</div><div>x-go-key-plan_5000</div><div>x-go-key-plan_5000</div><div>x-go-key-plan_5000</div><div>x-go-key-plan_5000</div><div>x-go-key-plan_5000</div><div>x-go-key-plan_5000</div><div>x-go-key-plan_5000</div><div>x-go-key-plan_5000</div><div>x-go-key-plan_5000</div><div>x-go-key-plan_5000</div><div>x-go-key-plan_5000</div><div>x-go-key-plan_5000</div><div>x-go-key-plan_5000</div><div>x-go-key-plan_5000</div><div>x-go-key-plan_5000</div><div>x-go-key-plan_5000</div><div>x-go-key-plan_5000</div><div>x-go-key-plan_5000</div><div>x-go-key-plan_5000</div><div>x-go-key-plan_5000</div><div>x-go-key-plan_5000</div><div>x-go-key-plan_5000</div><div>x-go-key-plan_5000</div><div>x-go-key-plan_5000</div><div>x-go-key-plan_5000</div><div>x-go-key-plan_5000</div><div>x-go-key-plan_5000</div><div>x-go-key-plan_5000</div><div>x-go-key-plan_5000</div><div>x-go-key-plan_5000</div><div>x-go-key-plan_5000</div><div>x-go-key-plan_5000</div><div>x-go-key-plan_5000</div><div>x-go-key-plan_5000</div><div>x-go-key-plan_5000</div><div>x-go-key-plan_5000</div><div>x-go-key-plan_5000</div><div>x-go-key-plan_5000</div><div>x-go-key-plan_5000</div><div>x-go-key-plan_5000</div><div>x-go-key-plan_5000</div><div>x-go-key-plan_5000</div><div>x-go-key-plan_5000</div><div>x-go-key-plan_5000</div><div>x-go-key-plan_5000</div><div>x-go-key-plan_5000</div><div>x-go-key-plan_5000</div><div>x-go-key-plan_5000</div><div>x-go-key-plan_5000</div><div>x-go-key-plan_5000</div><div>x-go-key-plan_5000</div><div>x-go-key-plan_5000</div><div>x-go-key-plan_5000</div><div>x-go-key-plan_5000</div><div>x-go-key-plan_5000</div><div>x-go-key-plan_5000</div><div>x-go-key-plan_5000</div><div>x-go-key-plan_5000</div><div>x-go-key-plan_5000</div><div>x-go-key-plan_5000</div><div>x-go-key-plan_5000</div><div>x-go-key-plan_5000</div><div>x-go-key-plan_5000</div><div>x-go-key-plan_5000</div><div>x-go-key-plan_5000</div><div>x-go-key-plan_5000</div><div>x-go-key-plan_5000</div><div>x-go-key-plan_5000</div><div>x-go-key-plan_5000</div><div>x-go-key-plan_5000</div><div>x-go-key-plan_5000</div><div>x-go-key-plan_5000</div><div>x-go-key-plan_5000</div><div>x-go-key-plan_5000</div><div>x-go-key-plan_5000</div><div>x-go-key-plan_5000</div><div>x-go-key-plan_5000</div><div>x-go-key-plan_5000</div><div>x-go-key-plan_5000</div><div>x-go-key-plan_5000</div><div>x-go-key-plan_5000</div><div>x-go-key-plan_5000</div><div>x-go-key-plan_5000</div><div>x-go-key-plan_5000</div><div>x-go-key-plan_5000</div><div>x-go-key-plan_5000</div><div>x-go-key-plan_5000</div><div>x-go-key-plan_5000</div><div>x-go-key-plan_5000</div><div>x-go-key-plan_5000</div><div>x-go-key-plan_5000</div><div>x-go-key-plan_5000</div><div>x-go-key-plan_5000</div><div>x-go-key-plan_5000</div><div>x-go-key-plan_5000</div><div>x-go-key-plan_5000</div><div>x-go-key-plan_5000</div><div>x-go-key-plan_5000</div><div>x-go-key-plan_5000</div><div>x-go-key-plan_5000</div><div>x-go-key-plan_5000</div><div>x-go-key-plan_5000</div><div>x-go-key-plan_5000</div><div>x-go-key-plan_5000</div><div>x-go-key-plan_5000</div><div>x-go-key-plan_5000</div><div>x-go-key-plan_5000</div><div>x-go-key-plan_5000</div><div>x-go-key-plan_5000</div><div>x-go-key-plan_5000</div><div>x-go-key-plan_5000</div><div>x-go-key-plan_5000</div><div>x-go-key-plan_5000</div><div>x-go-key-plan_5000</div><div>x-go-key-plan_5000</div><div>x-go-key-plan_5000</div><div>x-go-key-plan_5000</div><div>x-go-key-plan_5000</div><div>x-go-key-plan_5000</div><div>x-go-key-plan_5000</div><div>x-go-key-plan_5000</div><div>x-go-key-plan_5000</div><div>x-go-key-plan_5000</div><div>x-go-key-plan_5000</div><div>x-go-key-plan_5000</div><div>x-go-key-plan_5000</div><div>x-go-key-plan_5000</div><div>x-go-key-plan_5000</div><div>x-go-key-plan_5000</div><div>x-go-key-plan_5000</div><div>x-go-key-plan_5000</div><div>x-go-key-plan_5000</div><div>x-go-key-plan_5000</div><div>x-go-key-plan_5000</div><div>x-go-key-plan_5000</div><div>x-go-key-plan_5000</div><div>x-go-key-plan_5000</div><div>x-go-key-plan_5000</div><div>x-go-key-plan_5000</div><div>x-go-key-plan_5000</div><div>x-go-key-plan_5000</div><div>x-go-key-plan_5000</div><div>x-go-key-plan_5000</div><div>x-go-key-plan_5000</div><div>x-go-key-plan_5000</div><div>x-go-key-plan_5000</div><div>x-go-key-plan_5000</div><div>x-go-key-plan_5000</div><div>x-go-key-plan_5000</div><div>x-go-key-plan_5000</div><div>x-go-key-plan_5000</div><div>x-go-key-plan_5000</div><div>x-go-key-plan_5000</div><div>x-go-key-plan_5000</div><div>x-go-key-plan_5000</div><div>x-go-key-plan_5000</div><div>x-go-key-plan_5000</div><div>x-go-key-plan_5000</div><div>x-go-key-plan_5000</div><div>x-go-key-plan_5000</div><div>x-go-key-plan_5000</div><div>x-go-key-plan_5000</div><div>x-go-key-plan_5000</div><div>x-go-key-plan_5000</div><div>x-go-key-plan_5000</div><div>x-go-key-plan_5000</div><div>x-go-key-plan_5000</div><div>x-go-key-plan_5000</div><div>x-go-key-plan_5000</div><div>x-go-key-plan_5000</div><div>x-go-key-plan_5000</div><div>x-go-key-plan_5000</div><div>x-go-key-plan_5000</div><div>x-go-key-plan_5000</div><div>x-go-key-plan_5000</div><div>x-go-key-plan_5000</div><div>x-go-key-plan_5000</div><div>x-go-key-plan_5000</div><div>x-go-key-plan_5000</div><div>x-go-key-plan_5000</div><div>x-go-key-plan_5000</div><div>x-go-key-plan_5000</div><div>x-go-key-plan_5000</div><div>x-go-key-plan_5000</div><div>x-go-key-plan_5000</div><div>x-go-key-plan_5000</div><div>x-go-key-plan_5000</div><div>x-go-key-plan_5000</div><div>x-go-key-plan_5000</div><div>x-go-key-plan_5000</div><div>x-go-key-plan_5000</div><div>x-go-key-plan_5000</div><div>x-go-key-plan_5000</div><div>x-go-key-plan_5000</div><div>x-go-key-plan_5000</div><div>x-go-key-plan_5000</div><div>x-go-key-plan_5000</div><div>x-go-key-plan_5000</div><div>x-go-key-plan_5000</div><div>x-go-key-plan_5000</div><div>x-go-key-plan_5000</div><div>x-go-key-plan_5000</div><div>x-go-key-plan_5000</div><div>x-go-key-plan_5000</div><div>x-go-key-plan_5000</div><div>x-go-key-plan_5000</div><div>x-go-key-plan_5000</div><div>x-go-key-plan_5000</div><div>x-go-key-plan_5000</div><div>x-go-key-plan_5000</div><div>x-go-key-plan_5000</div><div>x-go-key-plan_5000</div><div>x-go-key-plan_5000</div><div>x-go-key-plan_5000</div><div>x-go-key-plan_5000</div><div>x-go-key-plan_5000</div><div>x-go-key-plan_5000</div><div>x-go-key-plan_5000</div><div>x-go-key-plan_5000</div><div>x-go-key-plan_5000</div><div>x-go-key-plan_5000</div><div>x-go-key-plan_5000</div><div>x-go-key-plan_5000</div><div>x-go-key-plan_5000</div><div>x-go-key-plan_5000</div><div>x-go-key-plan_5000</div><div>x-go-key-plan_5000</div><div>x-go-key-plan_5000</div><div>x-go-key-plan_5000</div><div>x-go-key-plan_5000</div><div>x-go-key-plan_5000</div><div>x-go-key-plan_5000</div><div>x-go-key-plan_5000</div><div>x-go-key-plan_5000</div><div>x-go-key-plan_5000</div><div>x-go-key-plan_5000</div><div>x-go-key-plan_5000</div><div>x-go-key-plan_5000</div><div>x-go-key-plan_5000</div><div>x-go-key-plan_5000</div><div>x-go-key-plan_5000</div><div>x-go-key-plan_5000</div><div>x-go-key-plan_5000</div><div>x-go-key-plan_5000</div><div>x-go-key-plan_5000</div><div>x-go-key-plan_5000</div><div>x-go-key-plan_5000&lt;/</div></div>																																				

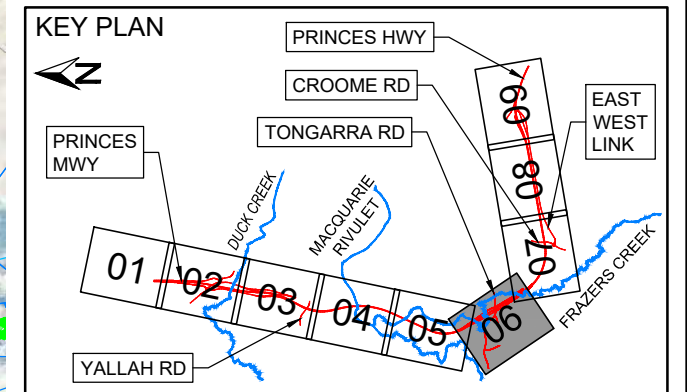


	0	5	10	15	20	25	30	35	40	45	50mm ON A3 SIZE ORIGINAL
--	---	---	----	----	----	----	----	----	----	----	--------------------------



## LEGEND

	PREMISE BOUNDARY
	ROAD ALIGNMENT
	WATERCOURSE
	ANCILLARY FACILITY SITE
	SENSITIVE RECEIVER
	DUST MONITORING GAUGE LOCATION
	REAL TIME MONITORING SITE
	NOISE MONITORING LOCATION



ACCEPTED FOR CONSTRUCTION

[illegible]



	0	5	10	15	20	25	30	35	40	45	50mm ON A3 SIZE ORIGINAL
--	---	---	----	----	----	----	----	----	----	----	--------------------------



TO KIAMA

ALBION PARK RAIL CEMETERY

FIGTREE \$T\$



1

22



10

10



五

1

1

1

1

1

1

1



**GIVE**

PA

	PREMISE BOUNDARY
	ROAD ALIGNMENT
	WATERCOURSE
	ANCILLARY FACILITY SITE
	SENSITIVE RECEIVER
	DUST MONITORING GAUGE LOCATION
	REAL TIME MONITORING SITE
	NOISE MONITORING LOCATION

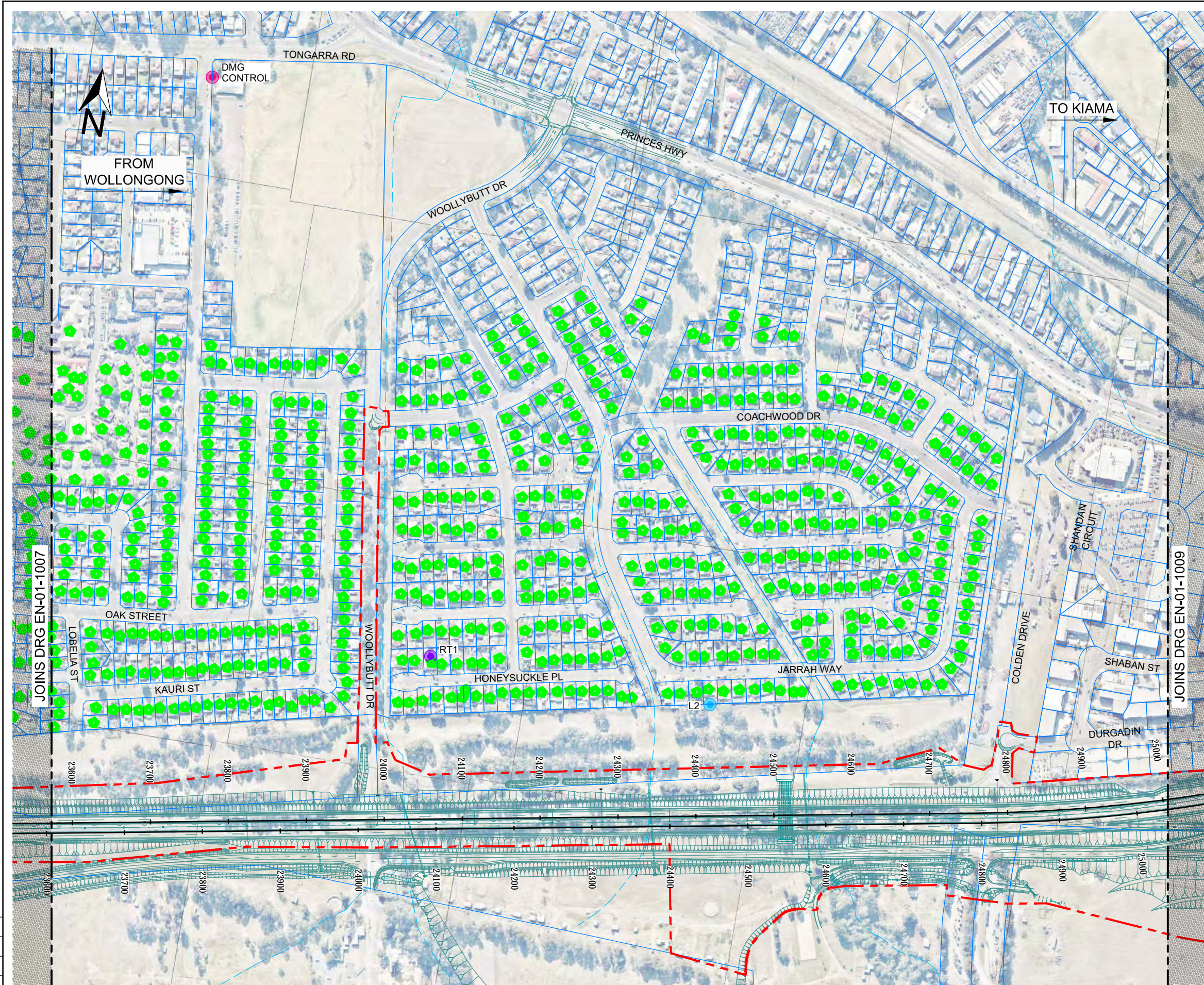


ACCEPTED FOR CONSTRUCTION

[illegible]



THIS DRAWING MAY BE PREPARED IN COLOUR AND MAY BE INCOMPLETE IF COPIED



LEGEND

PREMISE BOUNDARY

ROAD ALIGNMENT

WATERCOURSE

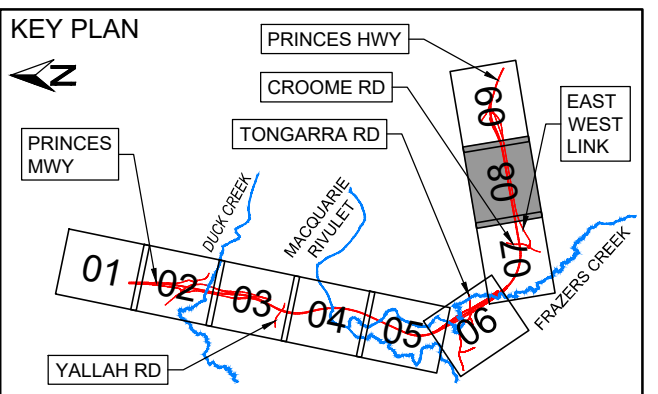
ANCILLARY FACILITY SITE

SENSITIVE RECEIVER

DUST MONITORING GAUGE LOCATION

REAL TIME MONITORING SITE

NOISE MONITORING LOCATION



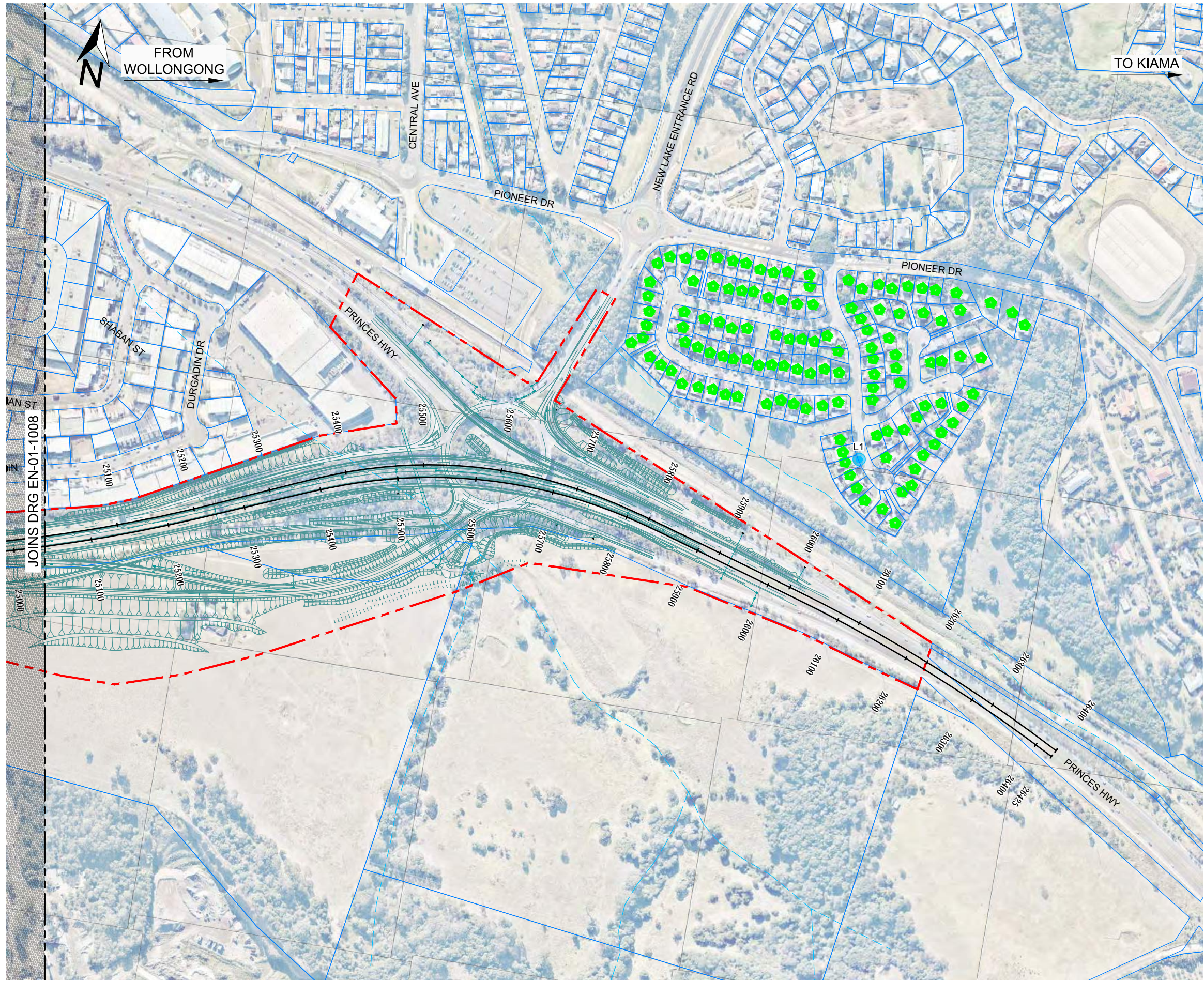
ACCEPTED FOR CONSTRUCTION

DRAWING FILE LOCATION / NAME X:\Projects\00037 Albion Park Rail Bypass\AutoCAD\Drawings\EN Environmental\00037-DRG-EN-01-1008_003.dwg			DESIGN LOT CODE CE		DESIGN MODEL FILE(S) USED FOR DOCUMENTATION OF THIS DRAWING		PLOT DATE / TIME 29 May 2020 12:17:10		PLOT BY andre		CLIENT WOLLONGONG CITY COUNCIL AND SHELLHARBOUR CITY COUNCIL	
EXTERNAL REFERENCE FILES			WVR No.		APPROVAL		SCALES ON A3 SIZE DRAWING		DRAWINGS / DESIGN PREPARED BY		M1 PRINCES MOTORWAY	
			NA		NA		25 0 50 100		DRAWN D.BOURKE		ALBION PARK RAIL BYPASS	
			NA		NA		SCALE 1:5000		DRG CHECK M.DOUGLAS		STG 2 - PRINCES MWY BETWEEN YALLAH & OAK FLATS	
							CO-ORDINATE SYSTEM MGA ZONE 56		DESIGN J.COX		ENVIRONMENTAL	
							HEIGHT DATUM AHD		DESIGN CHECK E.AMORES		SENSITIVE AREA PLANS	
									DESIGN MNGR P.RAKKAR		RMS REGISTRATION No. DS2018/001756	
									PROJECT MNGR P.RAKKAR		ISSUE STATUS ACCEPTED FOR CONSTRUCTION	
											EDMS No.	
											SHEET No. EN-01-1008	
											PART 1	
											ISSUE 03	
											SHEET 8 OF 9	
											© Roads and Maritime Services	



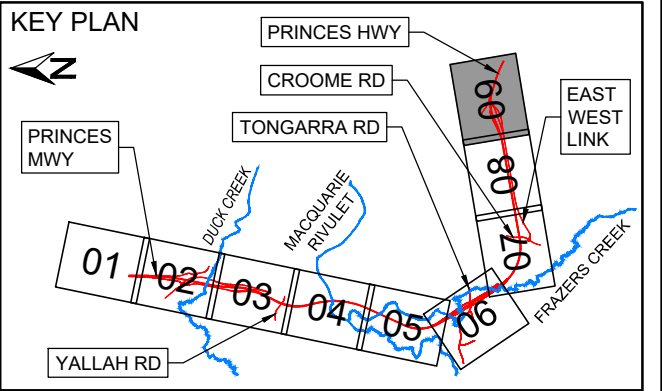
THIS DRAWING MAY BE PREPARED IN COLOUR AND MAY BE INCOMPLETE IF COPIED

0 15 30 45 60 75 90 105 120 135 150 165 180 195 210 225 240 255 270 285 300 315 330 345 360 375 390 405 420 435 450 465 480 495 510 525 540 555 570 585 600 615 630 645 660 675 690 705 720 735 750 765 780 795 810 825 840 855 870 885 900 915 930 945 960 975 990 1000



**LEGEND**

- PREMISE BOUNDARY
- ROAD ALIGNMENT
- WATERCOURSE
- ANCILLARY FACILITY SITE
- SENSITIVE RECEIVER
- DUST MONITORING GAUGE LOCATION
- REAL TIME MONITORING SITE
- NOISE MONITORING LOCATION



ACCEPTED FOR CONSTRUCTION

DRAWING FILE LOCATION / NAME X:\Projects\00037 Albion Park Rail Bypass\AutoCAD\Drawings\EN Environmental\0037-DRG-EN-01-1009_1031.dwg						DESIGN LOT CODE CE		DESIGN MODEL FILE(S) USED FOR DOCUMENTATION OF THIS DRAWING				PLOT DATE / TIME 29 May 2020 12:18:13		PLOT BY andre		CLIENT		WOLLONGONG CITY COUNCIL AND SHELLHARBOUR CITY COUNCIL		A3																	
EXTERNAL REFERENCE FILES						WVR No.		APPROVAL		SCALES ON A3 SIZE DRAWING				DRAWINGS / DESIGN PREPARED BY				TITLE		NAME		DATE				PREPARED FOR		RMS REGISTRATION No. <b>DS2018/001756</b>		SHEET 9 OF 9		PART 1					
REV						DATE		AMENDMENT / REVISION DESCRIPTION																													
01						14.01.2019		ISSUED FOR CONSTRUCTION																													
02						24.01.2020		RE-ISSUED FOR CONSTRUCTION																													
03						29.05.2020		RE-ISSUED FOR CONSTRUCTION																													