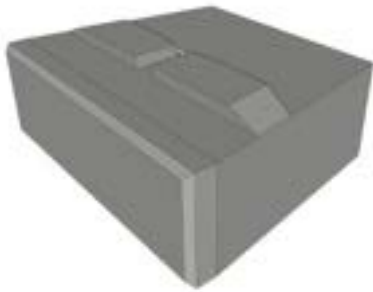


# Fulton Hogan Recon Wall Systems

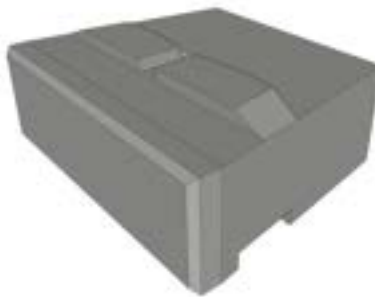


## Product Information Sheet

Fulton Hogan Precast are the only certified manufacturers and suppliers of Recon Retaining Wall Systems in New Zealand. Recon Wall Systems offer a durable, sustainable and efficient solution for either gravity or geogrid reinforced retaining walls that can sustain the toughest climates and heaviest of loads.



**Base block**



**Middle block**



**Top block**

### Key Features and Benefits

- Fast and cost effective.
- Doesn't require filling of voids.
- Various sizes and shapes.
- Various face finish types.
- Moulds are portable for remote projects.
- Aesthetically pleasing.
- Robust.
- Minimizes manual labour.
- Easy to install.
- Resistant to the elements.

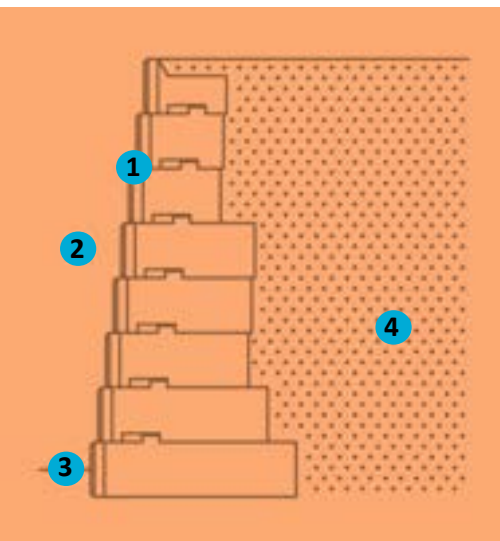


Contact us for more information:

P: +64 27 375 7820

E: [pierre.louw@fultonhogan.com](mailto:pierre.louw@fultonhogan.com)

# Gravity Retaining Walls



## ① Retaining Wall Block

Recon gravity blocks represent the workhorse of the wall system. With a 254cm setback per course and ranging in depth from 61cm to 213.4cm (custom depths up to 335.3cm), proper wall performance and design can be achieved in a variety of conditions.

## ② Site Geometry

In addition to wall heights, lengths, and layout, site-plans (grading plans) offer additional information about adjacent structures, surcharges, site access, property lines, utility locations and site drainage.

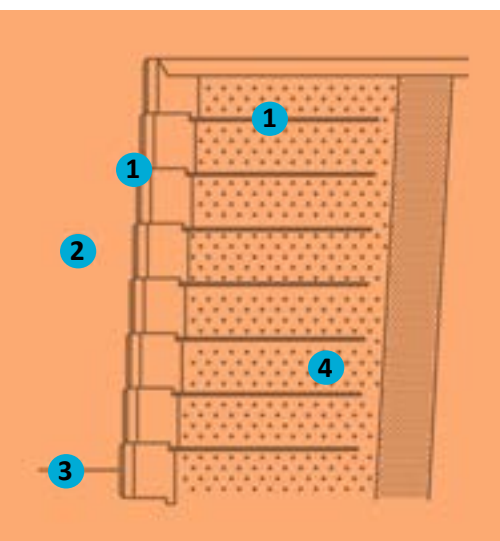
## ③ Wall Geometry

The geometry will be dictated by the specifics of the project site and topography. Geometry for each wall generally consists of: wall length, wall height and the location of corners and curves.

## ④ Soil Information

Soil is one of the main components of the structure. Soils come in numerous types and compositions. Therefore, Soil properties are used in the wall analysis to predict a wall's overall performance.

# Geogrid Reinforced Retaining Walls



## ① Retaining Wall Block and Geogrid

Recon's 40.6cm or 61cm deep block combined with geogrid creates a solid, reinforced mass to ensure proper wall performance and design for mechanically stabilized earth (MSE) applications.

## ② Site Geometry

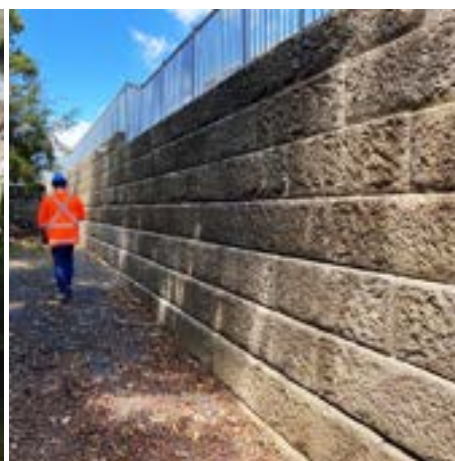
In addition to wall heights, lengths, and layout, site-plans (grading plans) offer additional information about adjacent structures, surcharges, site access, property lines, utility locations and site drainage.

## ③ Wall Geometry

The geometry will be dictated by the specifics of the project site and topography. Geometry for each wall generally consists of: wall length, wall height and the location of corners and curves.

## ④ Soil Information

Soil is one of the main components of the structure. Soils come in numerous types and compositions. Therefore, Soil properties are used in the wall analysis to predict a wall's overall performance.

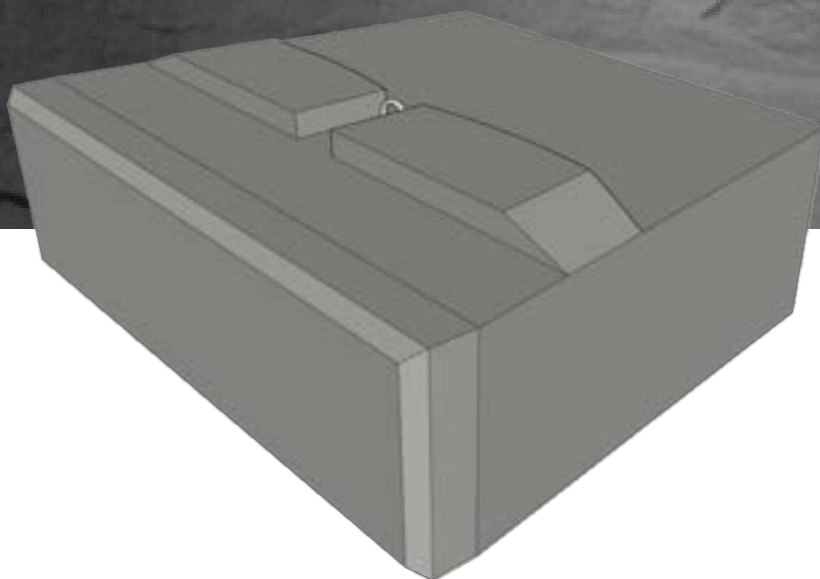


Contact us for more information:

P: +64 27 375 7820

E: [pierre.louw@fultonhogan.com](mailto:pierre.louw@fultonhogan.com)

# Base block



**Wall Coverage**

0.5 m<sup>2</sup>

**Front Face Dimensions**

50.6cm x 121.9cm

**Batter**

3.6°

UNIT ID	DEPTH CM	WEIGHT KG	VOLUME M <sup>3</sup>
<b>60B</b>	60.96	672	0.29
<b>100B</b>	99.06	1012	0.44
<b>115B</b>	114.30	1138	0.49
<b>150B</b>	60.96	1423	0.61
<b>165B</b>	167.64	1581	0.68
<b>180B</b>	182.88	1692	0.73
<b>200B</b>	198.12	1801	0.78
<b>215B</b>	213.36	1912	0.82

Contact us for more information:

P: +64 27 375 7820

E: pierre.louw@fultonhogan.com

# Middle block

**Wall Coverage**

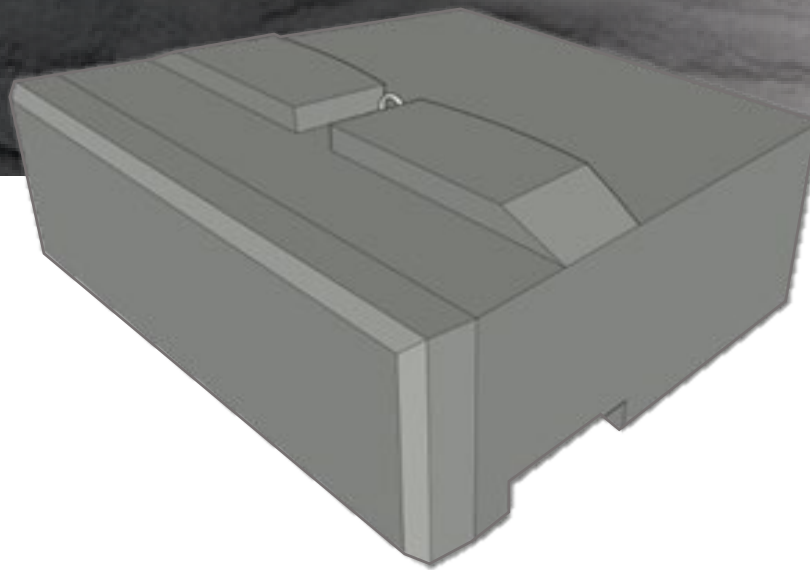
0.5 m<sup>2</sup>

**Front Face Dimensions**

40.64cm x 121.9cm

**Batter**

3.6°



UNIT ID	DEPTH CM	WEIGHT KG	VOLUME M <sup>3</sup>
<b>60M</b>	60.96	629	0.27
<b>100M</b>	99.06	975	0.42
<b>115M</b>	114.30	1103	0.47
<b>150M</b>	60.96	1386	0.60
<b>165M</b>	167.64	1534	0.66
<b>180M</b>	182.88	1645	0.71
<b>200M</b>	198.12	1755	0.76
<b>215M</b>	213.36	1865	0.80

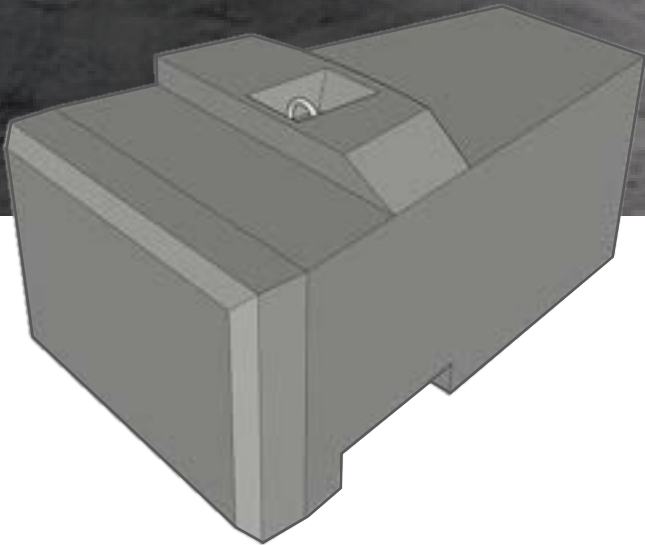
Contact us for more information:

P: +64 27 375 7820

E: pierre.louw@fultonhogan.com



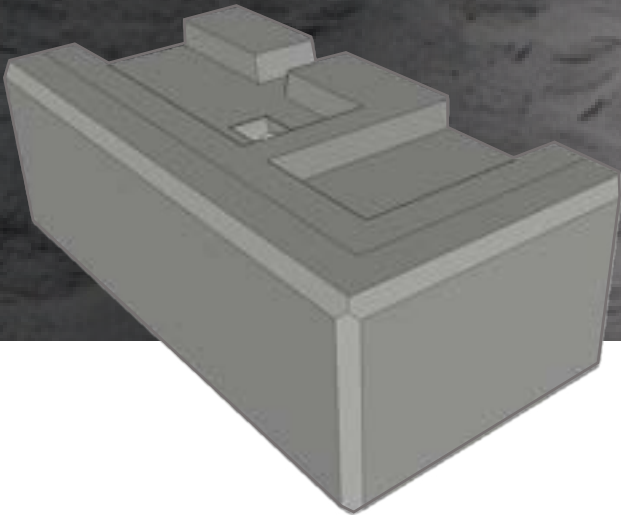
# Half block



**Wall Coverage**  
 0.25 m<sup>2</sup>  
**Front Face Dimensions**  
 40.64cm x 60.96cm  
**Batter**  
 3.6°

UNIT ID	DEPTH CM	WEIGHT KG	VOLUME M <sup>3</sup>
60H	60.96	298	0.13
100H	99.06	437	0.19

# Reversible Corner



**Unit area**  
 0.74 m<sup>2</sup>  
**Dimensions (L x H x Depth)**  
 121.92cm x 40.64cm x 60.96cm  
**Batter**  
 3.6°

UNIT ID	DEPTH CM	WEIGHT KG	VOLUME M <sup>3</sup>
C (L/R)	60.96	298	0.13

# Left, Right and Double Fitting Block

## Wall Coverage

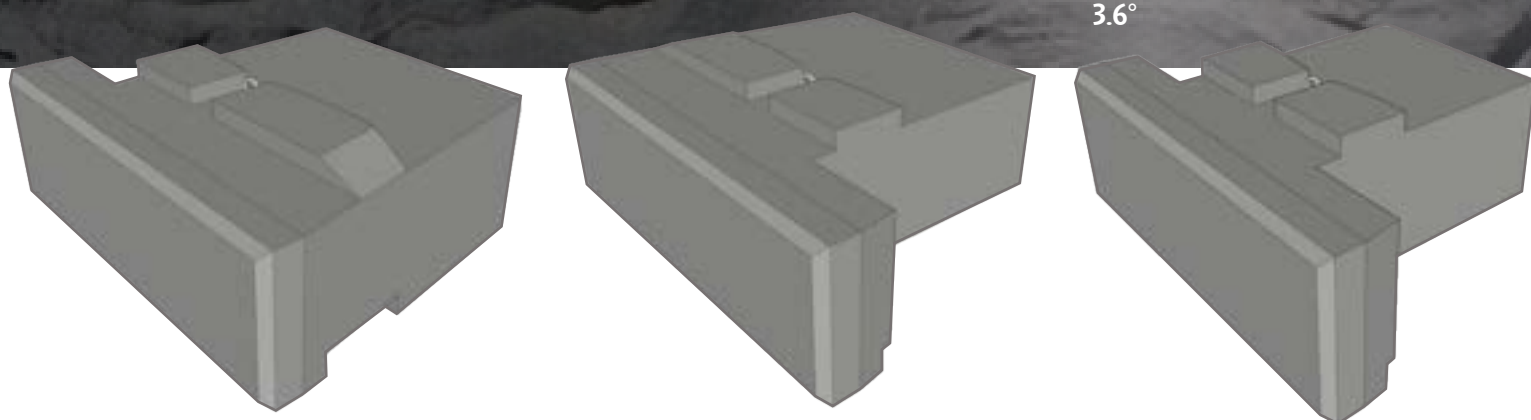
0.25 m<sup>2</sup>

## Front Face Dimensions

40.64cm x 121.9cm

## Batter

3.6°



UNIT ID	DEPTH CM	WEIGHT KG	VOLUME M <sup>3</sup>
<b>60FIT (L/R)</b>	60.96	542	0.23
<b>100FIT (L/R)</b>	99.06	822	0.35
<b>60FITD</b>	60.96	454	0.20
<b>100FITD</b>	99.06	672	0.29

# Top Block

## Wall Coverage

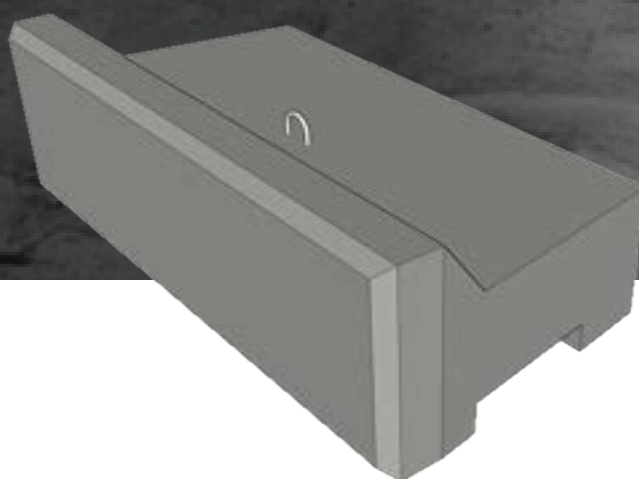
0.5 m<sup>2</sup>

## Dimensions

40.64cm x 121.92cm

## Batter

3.6°



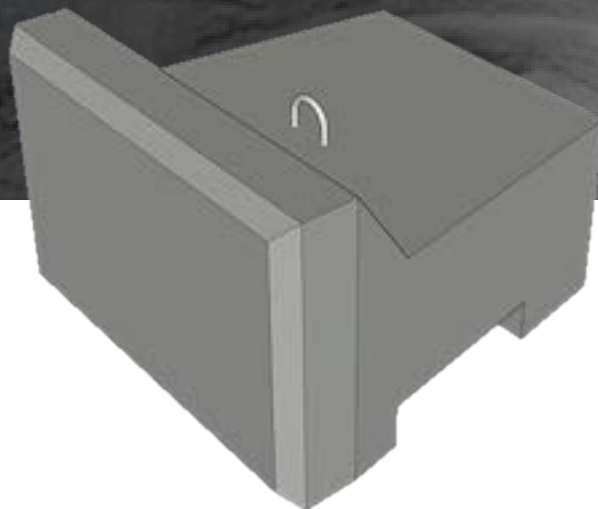
UNIT ID	DEPTH CM	WEIGHT KG	VOLUME M <sup>3</sup>
<b>60T</b>	60.96	454	0.20
<b>100T</b>	99.06	687	0.30

Contact us for more information:

P: +64 27 375 7820

E: pierre.louw@fultonhogan.com

# Half Top Block



**Wall Coverage**

0.25 m<sup>2</sup>

**Dimensions**

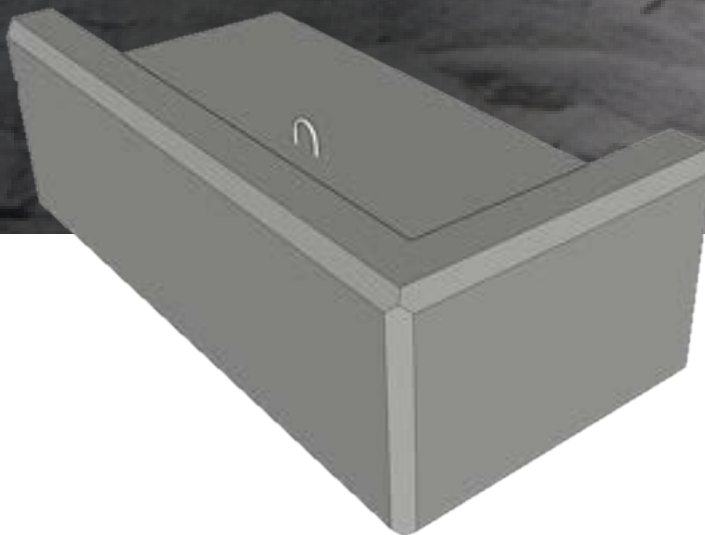
40.64cm x 60.64cm

**Batter**

3.6°

UNIT ID	DEPTH CM	WEIGHT KG	VOLUME M <sup>3</sup>
60HT	60.96	218	0.09
100HT	99.06	313	0.13

# Corner Top Block



**Unit area**

0.74 m<sup>2</sup>

**Dimensions (L x H x Depth)**

121.92cm x 40.64cm x 60.96cm

**Batter**

3.6°

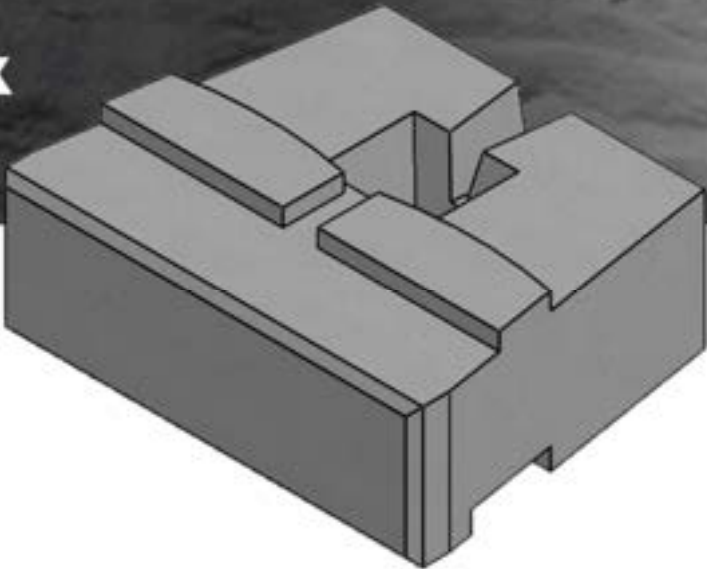
UNIT ID	DEPTH CM	WEIGHT KG	VOLUME M <sup>3</sup>
CT (L/R)	60.96	503	0.22

Contact us for more information:

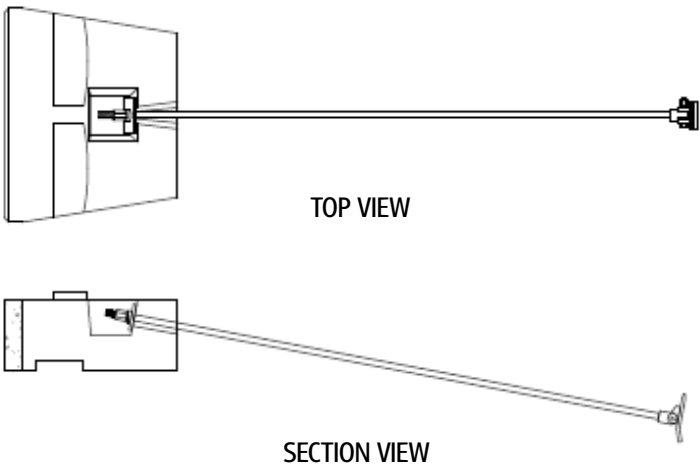
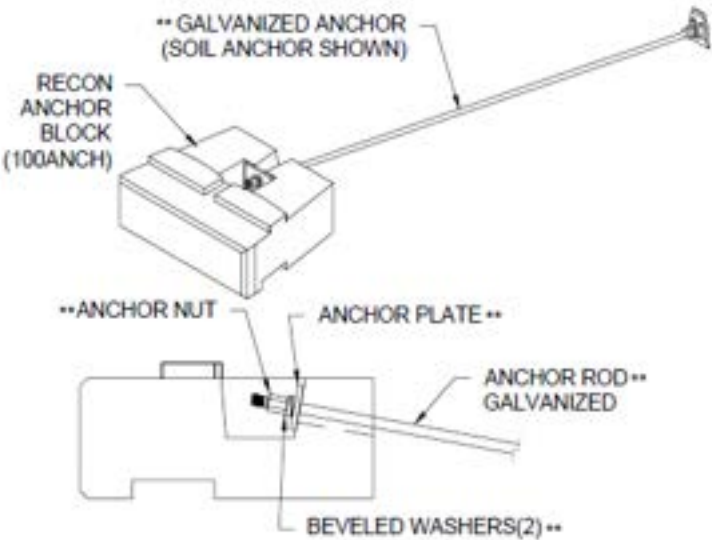
P: +64 27 375 7820

E: pierre.louw@fultonhogan.com

# Anchor/Soil Nailing Block



UNIT ID	DEPTH CM	WEIGHT KG	VOLUME M <sup>3</sup>
100ANCH	99.06	301	0.13



Contact us for more information:

P: +64 27 375 7820

E: fhprecast@fultonhogan.com



## **Branch Manager**

Pierre Louw

+64 27 275 7820

[Pierre.louw@fultonhogan.com](mailto:Pierre.louw@fultonhogan.com)

## **Production Manager**

Anton Van Bosch

+64 27 349 4165

[Anton.vanbosch@fultonhogan.com](mailto:Anton.vanbosch@fultonhogan.com)

## **Project Coordinator and Technical Advisor**

Darren Hooper

+64 278 374 032

[Darren.hooper@fultonhogan.com](mailto:Darren.hooper@fultonhogan.com)

## **Project Coordinator**

Pieter Ruthven

+64 27 227 5536

[Pieter.ruthven@fultonhogan.com](mailto:Pieter.ruthven@fultonhogan.com)



47 Airdrie Road, Ranui,  
Auckland, 0612